

Operations Department



The Operations Department is responsible for the operations and maintenance of the City's water, sanitary sewer, storm drainage, road and dyke infrastructure, as well as the operation and maintenance of the Wastewater Treatment Plant (WWTP), over 100 parks and sports fields and the City's recreational trail network.

Fourth Quarter Report, 2019



**CITY OF
CHILLIWACK**

Completion of the Vedder Rotary Loop Trail



The looping of Chilliwack's most popular trail was officially completed and open to the public on Saturday, November 16, 2019. Stretching from the Vedder Bridge to the pedestrian crossing on the Keith Wilson Bridge, on both north and south sides of the river, the Vedder Rotary Loop Trail offers more than 20 kilometres of uninterrupted, river side trail. The first five kilometres of this trail were originally built in 1995 between Vedder and Sumas Prairie Roads, following a donation from the three Rotary Clubs of the day. Facilitating a high quality of life for residents is a Council priority, and as additional trail fragments were added, it became clear that looping the Vedder Rotary Trail would create a unique recreational opportunity for all ages in the community. In addition to offering non-motorized trails to pedestrians, cyclists and equestrians, the loop trail connects a series of nodal points that offer parking, playgrounds, picnic facilities and washrooms, offering recreational opportunities for families and all types of recreational users. A new pedestrian bridge, crossing the Vedder River close to the loop's mid-way point upstream of the railway bridge, is scheduled for 2022.

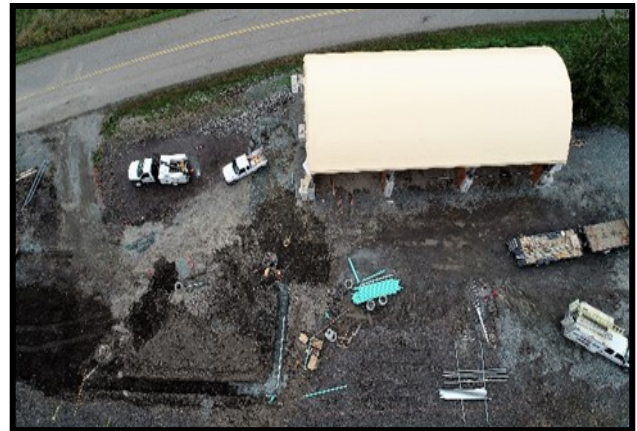
Webster Park Washroom Facilities - Portland Loo

A Portland Loo washroom facility and new drinking fountain has been placed in Webster Park. Webster Park already has a skate park, playground, picnic tables and gravel walking paths. With development growth in the area, as well and the popularity of the park, the need for a permanent washroom facility and secondary water fountain was deemed to be necessary. The permanent washroom facility and drinking fountain will provide a clean and safe area for the visitors of the park to refresh themselves while they enjoy the area. This will be the first Portland Loo that the City has installed and will act as a "test" facility for future consideration of adding Portland Loo's into the downtown core.



Satellite Winter Operations Facility

As a result of the continuing development in the eastern hillsides a need was identified to construct a satellite salt and sand storage facility to make snow and ice control operations for the east end of the City more efficient. A parcel of City owned land on Hack Brown Road was selected for the facility as it is ideally situated for equipment to service the Eastern Hillsides and Rosedale areas. The site presented a number of use restriction challenges due to its close proximity to the BC Hydro main transmission line but through consultation and negotiation between Operations and BC Hydro staff, we were able to develop a site plan that would meet all safety and development guidelines. Prior to the construction of the salt and sand facility all materials and equipment would be required to travel up to 15km from the Operations Centre to service East Chilliwack and would need to travel a 30km round trip to refill sanders with salt and sand at the Luckakuck Operations facility. The addition of this satellite facility has greatly reduced travel times and in turn vastly increased service levels to East Chilliwack. The new facility is also equipped with a small crew building which allows for staff rehabilitation during extended shifts, provides a lunch room, washrooms and a secure area to house consumable parts and fluids.



PLC Training for Staff and Contractors



Members of the electrical / mechanical and WWTP staff team recently attended specialized training at the Waste Water Treatment Plant. Under a partnership with ABB Canada, staff members and a number of local contractors attended a two-day workshop covering various topics in new automation technology and programmable logic control (PLC) software. Staying current with changes in technology is crucial in the operation of the City's water and waste water facilities. Providing staff with training allows them to confidently work on the City's utility systems to provide reliable and continuous utility service to the public.

Fall Safety Training at Operations

Operations staff successfully completed fall protection training, confined space entry and rescue as well as aerial work platform courses for scissor lifts, boom lifts and bucket truck operators. These skills will allow our workers to perform their daily tasks in a safe manner, effectively using their tools and equipment. 74 members successfully completed fall protection, covering fall arrest systems, the hierarchy of fall protection, inspection and maintenance of their fall protection equipment, as well as a practical assessment of self-rescue techniques.



Confined Space Entry was completed by 30 members. In addition, 12 members learned and applied technical skills to complete simulated confined space rescues. The group worked in teams to successfully extricate each other in a variety of scenarios using different lift and pull methods.



23 members of Operations successfully received certification for scissor and boom lifts, and seven members received certification for bucket truck operator. Additionally, six members from Fleet Maintenance successfully achieved their certification as Liquid Propane Gas Fitter Technicians. This certification will lead to a strong in-house service for the repair and installation of propane systems for our fleet vehicles.

Additional Bulk Water Filling Station

A second Bulk Water Filling Station location has now been made available to a steadily growing user group; the original being located at 46893 Bailey Road and now an additional location at 45160 Yale Road. The primary purpose of the initial station was to provide water to Ryder Lake area residents who were experiencing issues obtaining potable water from dry water wells during the summer months. With the addition of the location on Yale Road, the ability to access water for commercial use has now also become a reality.

To keep the intended purposes of these two user groups independent from one another, two types of accounts have been set up: residential and commercial. Specific requirements have been applied to each type of account to ensure both user groups are provided the appropriate level of service.

One of these conditions for access is the application of a new fee-based system. As of January 2020, an annual membership fee is required for all users of the stations. This fee is due at the beginning of each calendar year to keep the user's account active. As well, a dispensing fee has been applied to commercial users that are hauling water for reasons other than domestic use. This new membership structure not only keeps customers accountable to the station usage rules, but also allows the City of Chilliwack to maintain both stations to industry standards. And, to continue to provide the level of service that the users have become accustomed to over time.

According to the City of Chilliwack Miscellaneous Rates Bylaw 2001, No.2750" *Schedule "G"* Potable Water Filling Station, user charges shall be as follows:

- (1) An annual fee is due and payable to the Collector of the City of Chilliwack prior to the issuance of a Potable Water Filling Station access card.
 - (a) Residential User Annual Fee \$ 25.00
 - (b) Commercial User Annual Fee \$ 100.00
- (2) Commercial User Dispensing Fee \$ 5.00 (Billed Quarterly)

