

Evans Interchange/Connector Project Announcement

The Honourable John Les, *MLA for Chilliwack-Sumas*, announced on November 9, 2007, that the BC Ministry of Transportation will contribute \$4 million towards the highway interchange, to assist in the funding of the \$40.5 million budget for the Evans Road Connector Project. The Honourable Chuck Strahl, *MP Chilliwack-Fraser Canyon*, Honourable John Les and Honourable Barry Penner, *MLA Chilliwack-Kent*, also announced that the City of Chilliwack received a \$2 million grant from the Canada-British Columbia Municipal Rural Infrastructure Fund (MRIF) for the project.

Project construction is slated to begin in spring 2008, with completion in 2010. The project will link Evans Parkway to the south with Ashwell Road to the north - a distance of approximately 2.5 km. Chilliwack residents on both sides of the Trans Canada Highway will gain better access to employment, recreation, culture and commercial services. The project will support the growth of the University College of the Fraser Valley, as well as jobs and investment at many other locations. Transit, cycling and pedestrian links will also be improved.

The construction process will have short-term impacts on local traffic and create some noise and dust. The contractor will operate a public contact telephone line and provide an e-mail address to address construction-related concerns. Please watch for contact information in the local newspapers and in the mail this spring.

Project Partners

Canada



The Best Place on Earth



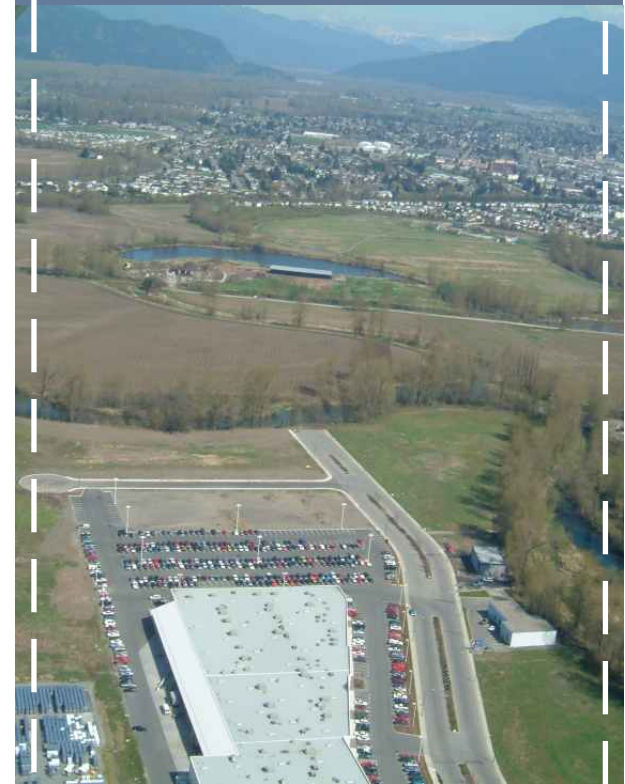
City of Chilliwack



More Information:

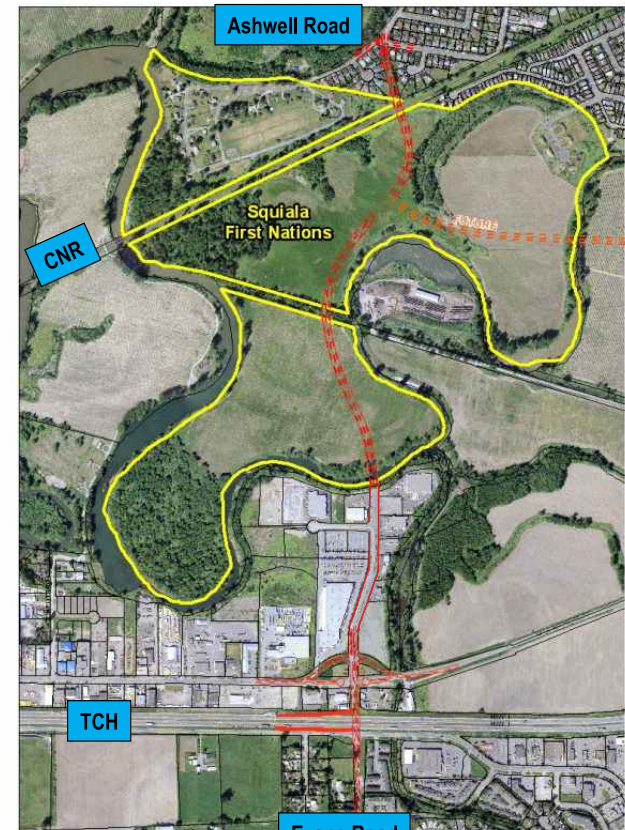
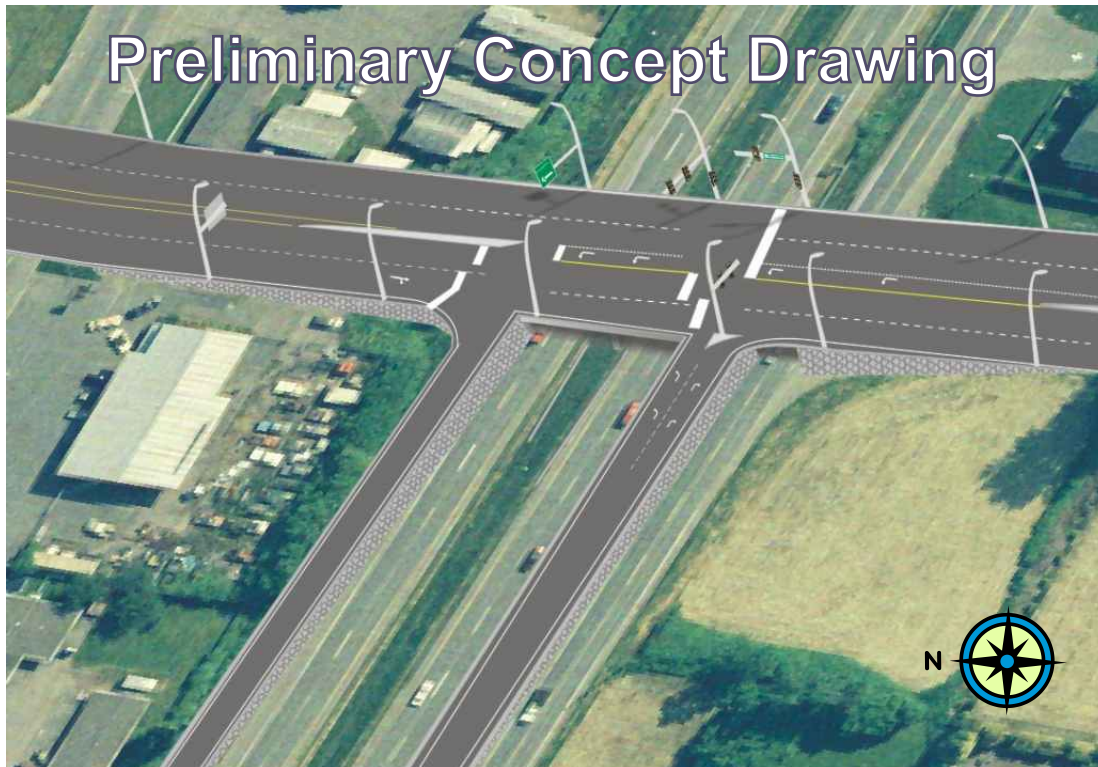
This project will result in long-term changes to commuting and traffic patterns. A simplified route plan and other information is posted on the City website at www.chilliwack.com/evans and will be updated regularly. If you still have questions about the project, please contact Engineering at City Hall at 604-793-2907.

Evans Interchange / Connector Project



Spring 2008!
- Project Update -

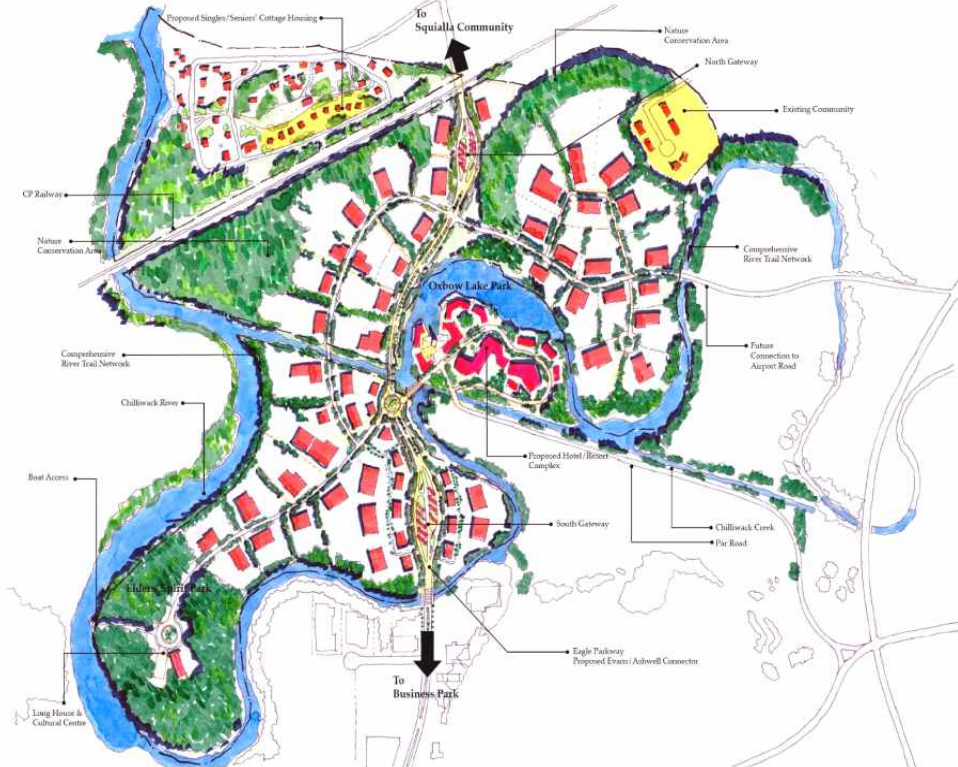
Preliminary Concept Drawing



ABOVE:
The drawing above illustrates the proposed route for the connector road, with a maximum speed limit of 50 kms/hr. Yale Road West will be realigned, with a small curve and an intersection added at the interchange. Improvements to Ashwell Road in the short term will include left turn lanes at critical intersections. In the future, if traffic volumes warrant, additional capital improvements will be programmed for Ashwell Road.

TOP LEFT:
The preliminary concept drawing on the top left illustrates the on and off ramps on the south-west and north-west sides of the interchange (westbound on-ramp and eastbound off-ramp).

LEFT:
The City has worked closely with the Squiala First Nation and the Federal and Provincial Governments to develop a right of way agreement that will allow the new road to cross Squiala lands. With new road access and utility services, the Squiala will enjoy a wide range of new development opportunities. A preliminary development plan is illustrated on the lower left.



Preliminary Development Plan

Feb. 8, 2007

