



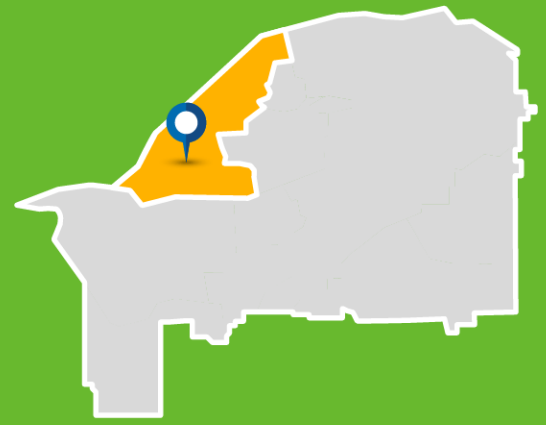
Chilliwack West NEIGHBOURHOOD PROFILE



Chilliwack West

NEIGHBOURHOOD PROFILE

Includes Skwahla and Squiala First Nations

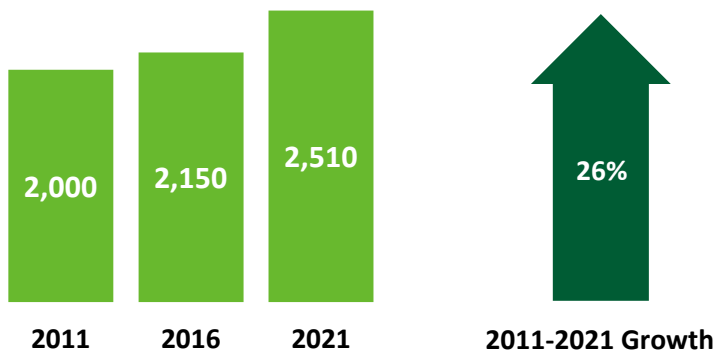


Chilliwack West stretches along the Fraser River west of Chilliwack Proper and north of Highway 1, including Chilliwack Mountain, Aitchelitz, Shxwhá:y Village, Skwah and Squiala First Nations. The neighbourhood is unique within the City, with a large industrial area (Village West) and big box stores along the highway. The neighbourhood is sparsely populated with residential cul-de-sacs and small subdivisions up the slopes of Chilliwack Mountain.



Population (Who We Are)

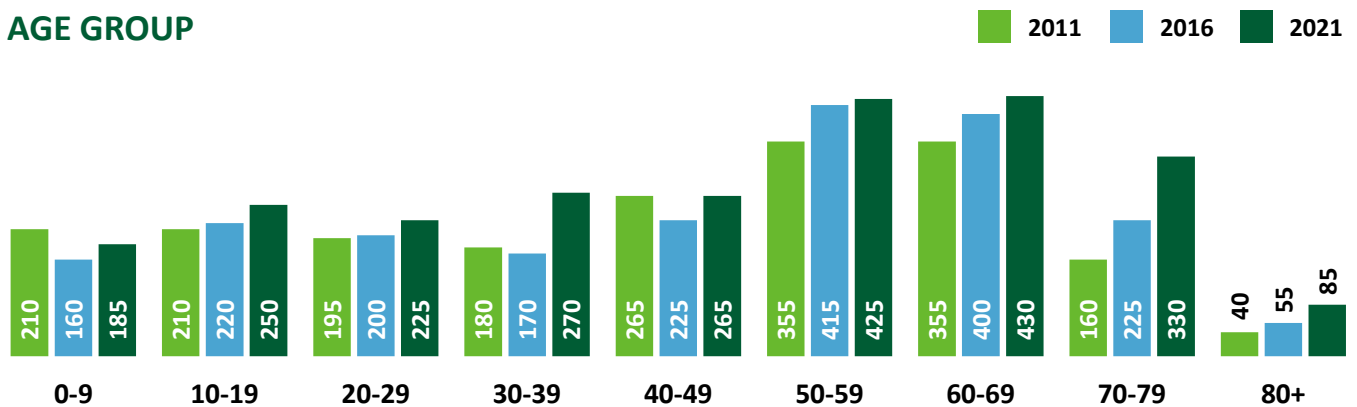
POPULATION TREND



Total Population

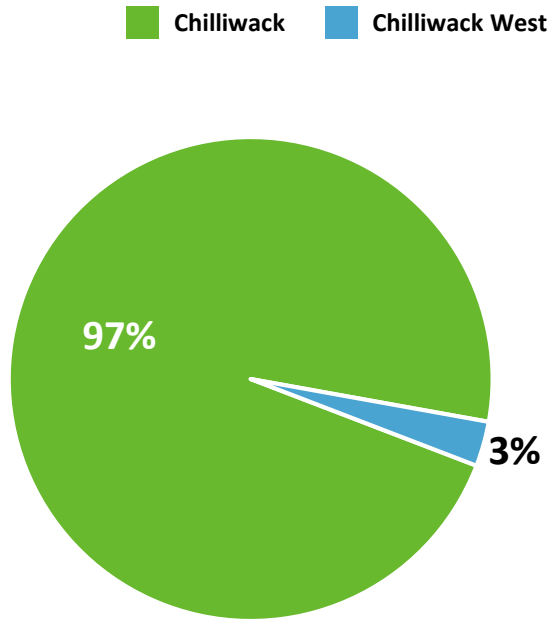


AGE GROUP

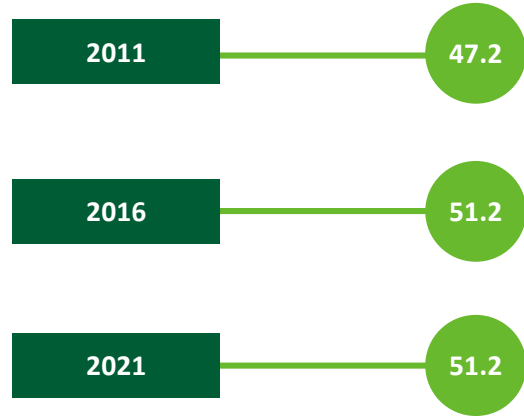


Population (Who We Are)

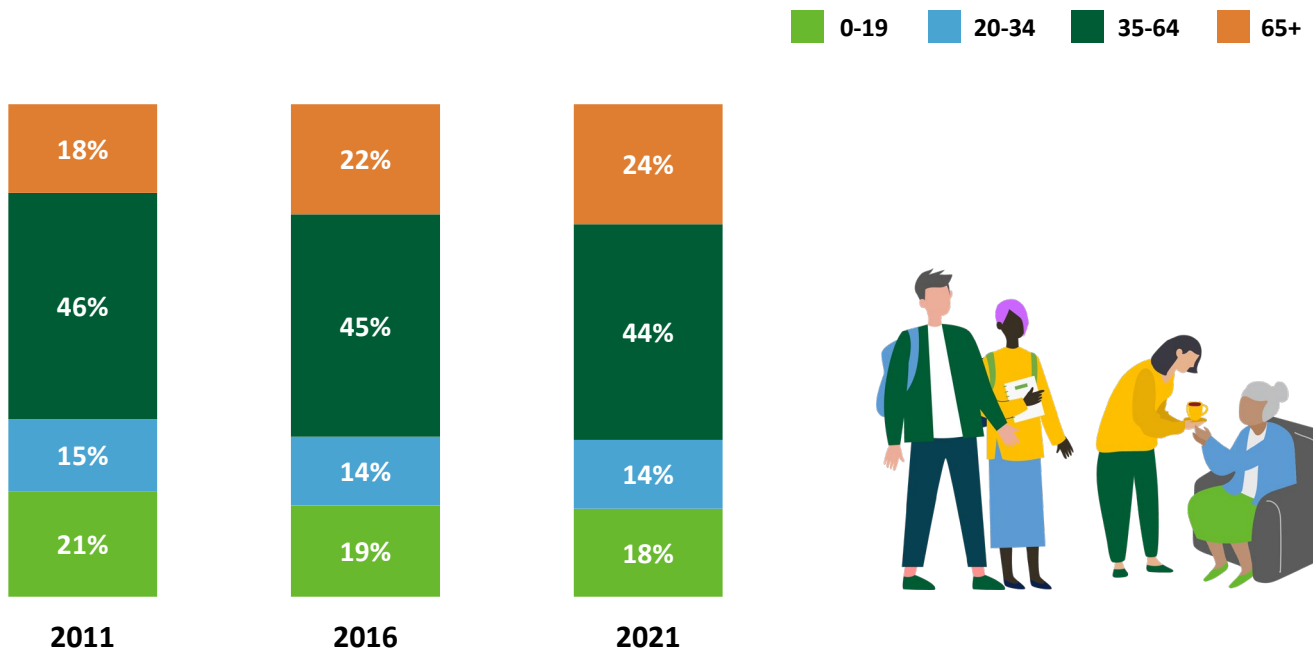
SHARE OF CHILLIWACK POPULATION IN 2021



MEDIAN AGE

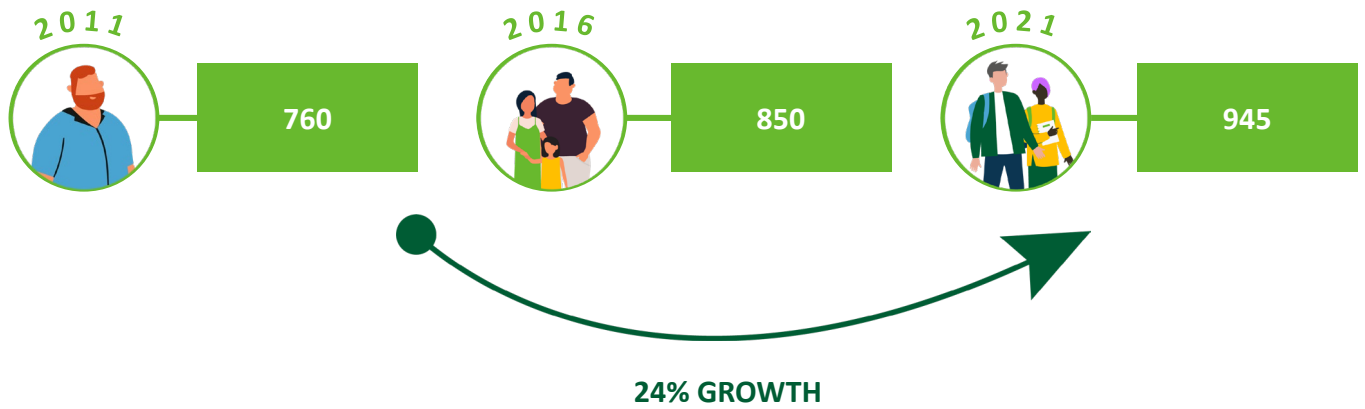


SHARE OF POPULATION BY AGE RANGE

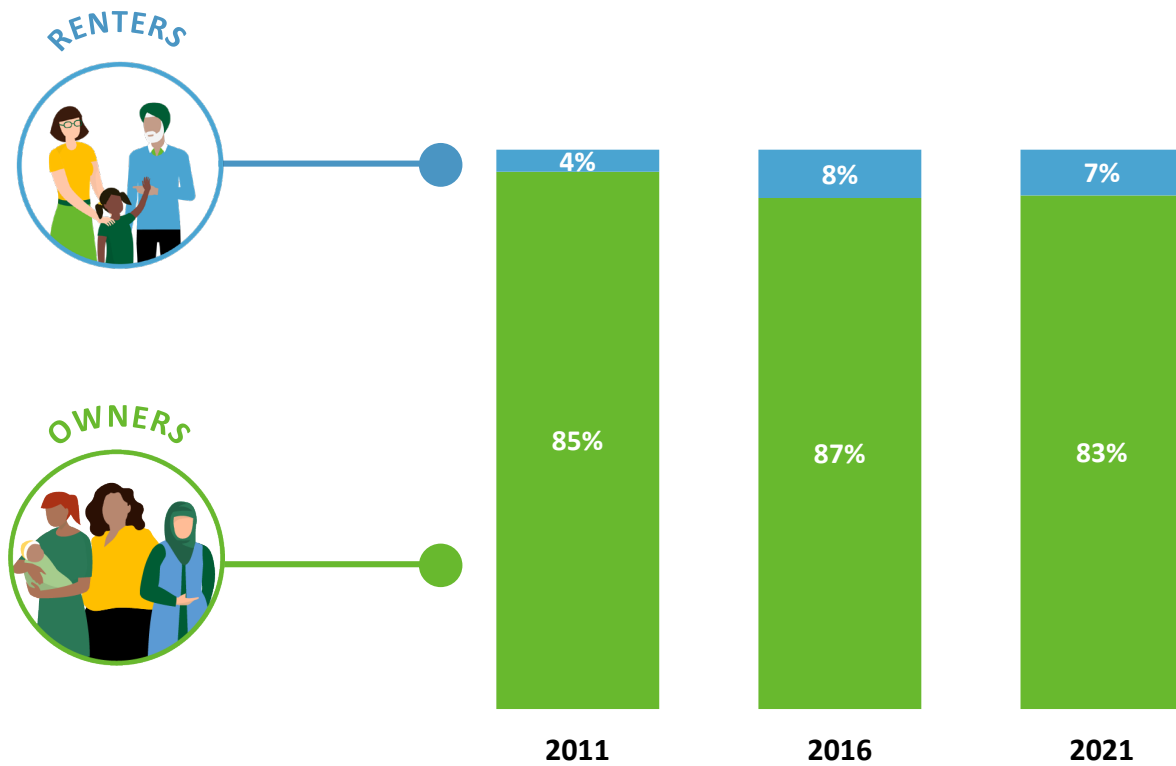


Households (How We Live)

NUMBER OF HOUSEHOLDS



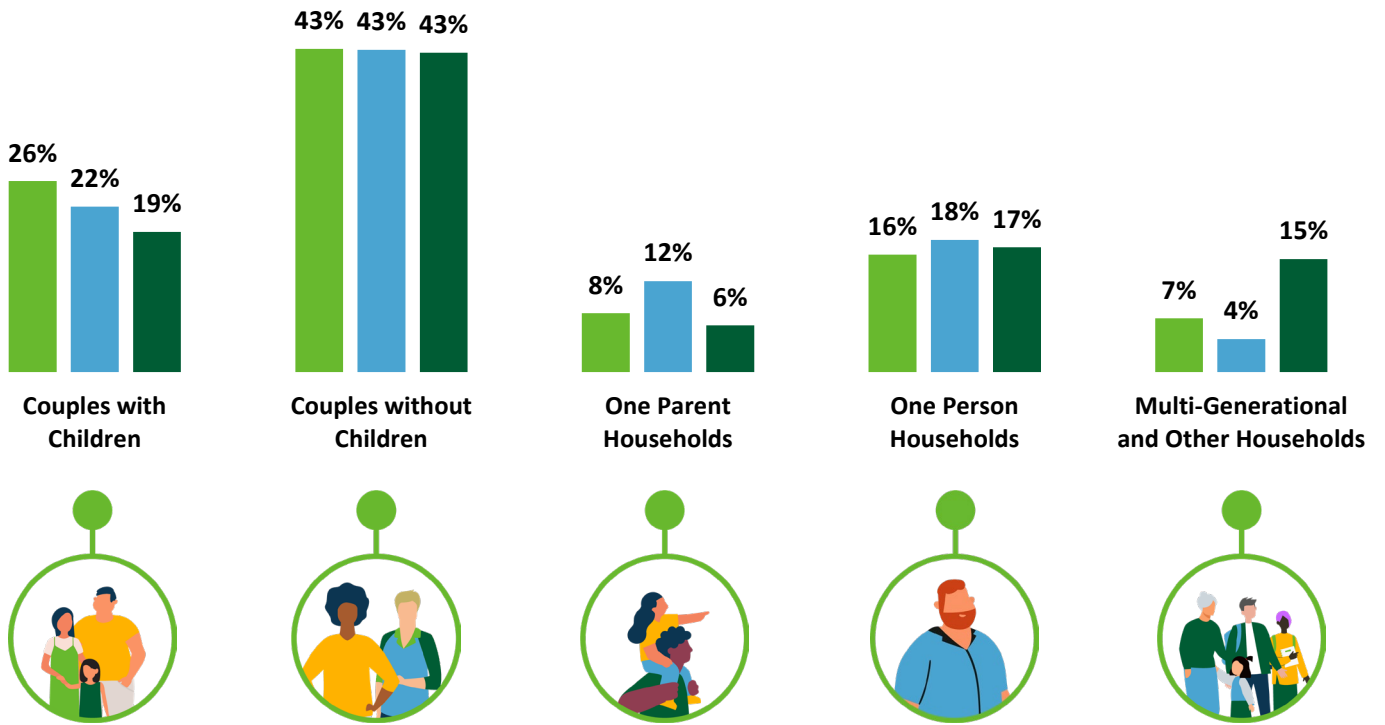
SHARE OF HOUSEHOLDS WHO OWN OR RENT



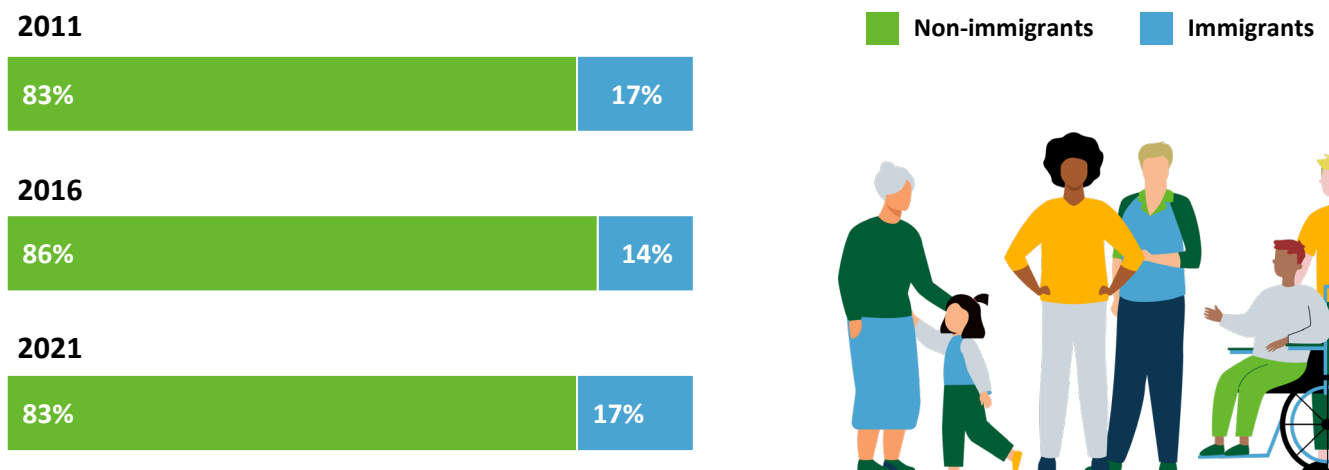
Households (How We Live)

HOUSEHOLD COMPOSITION

2011 2016 2021



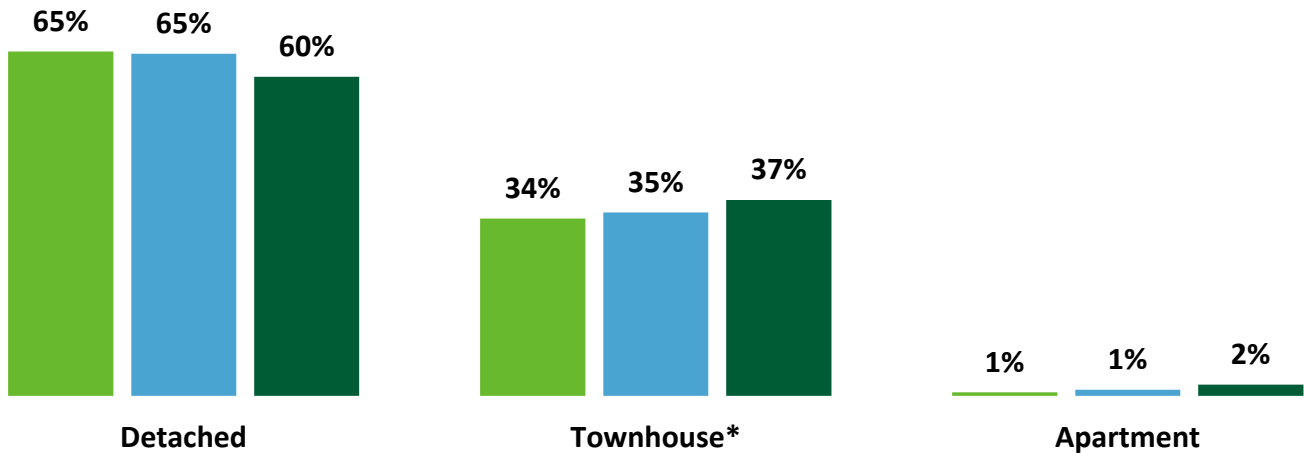
SHARE OF HOUSEHOLDS WHO ARE IMMIGRANTS



Dwellings (Where We Live)

HOUSING TYPE

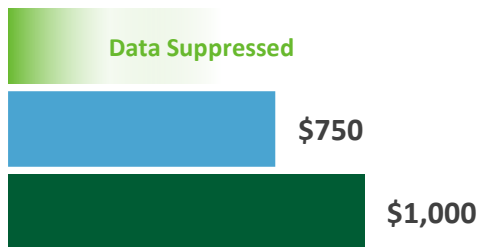
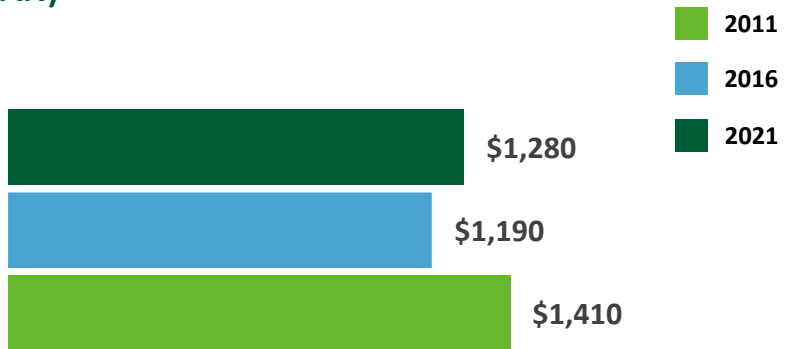
2011 2016 2021



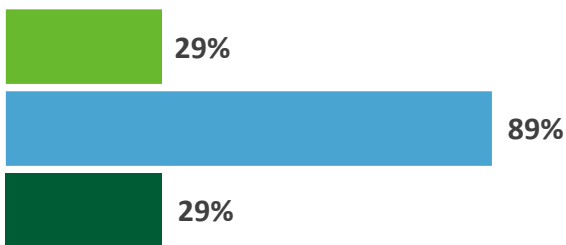
* Includes duplex & detached with suite

Dwellings (Where We Live)

MONTHLY SHELTER COST (MEDIAN)

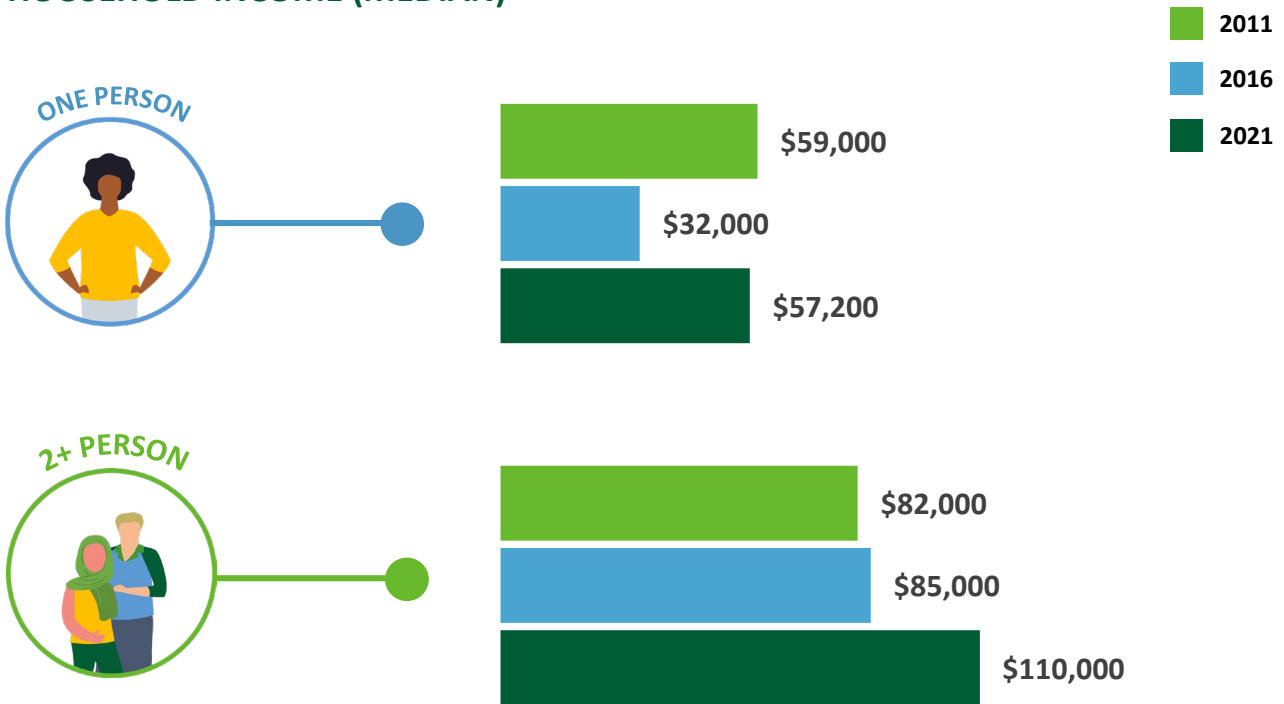


SHARE OF HOUSEHOLDS SPENDING 30%+ OF INCOME ON HOUSING

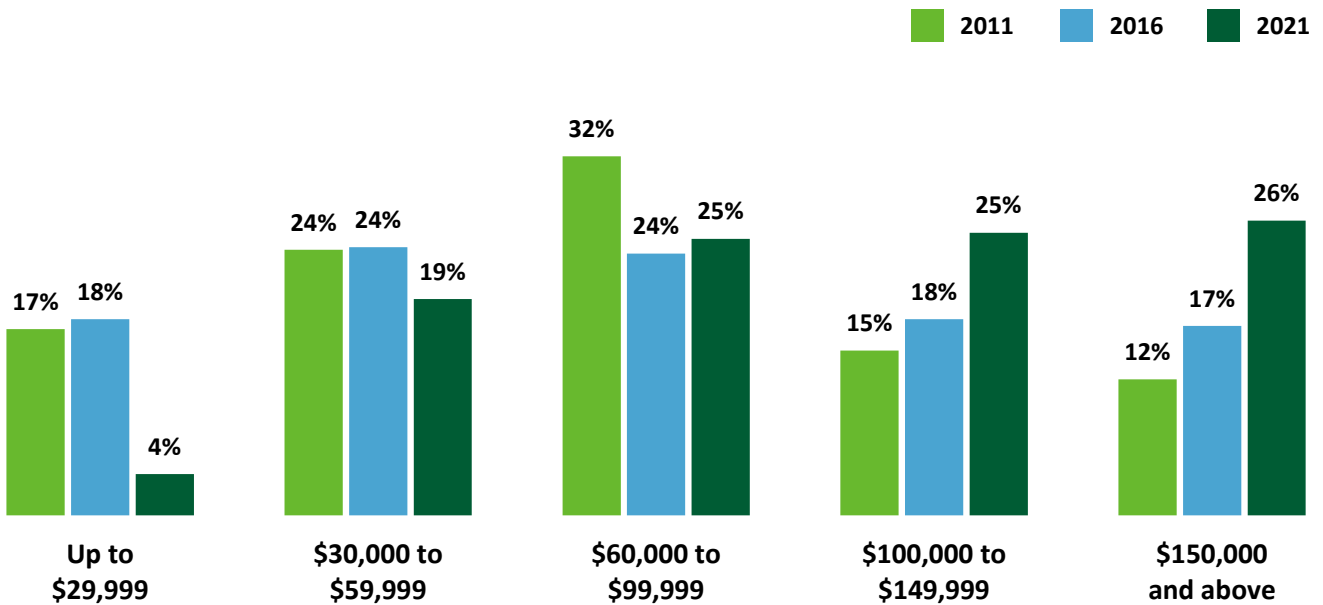


Income (How Much We Make)

HOUSEHOLD INCOME (MEDIAN)



SHARE OF HOUSEHOLDS BY INCOME RANGE

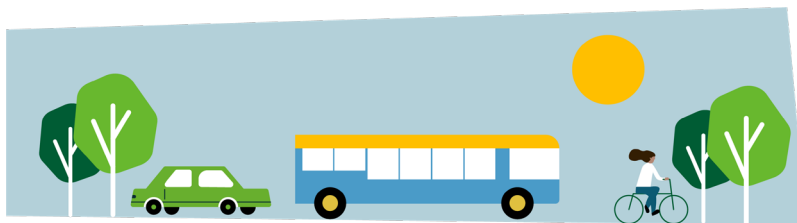


Employment (How We Work)

TOP INDUSTRIES



COMMUTE MODE



	Car	Transit	Bicycle, walk or other
2011	94%	0%	6%
2016	95%	1%	4%
2021	92%	0%	8%

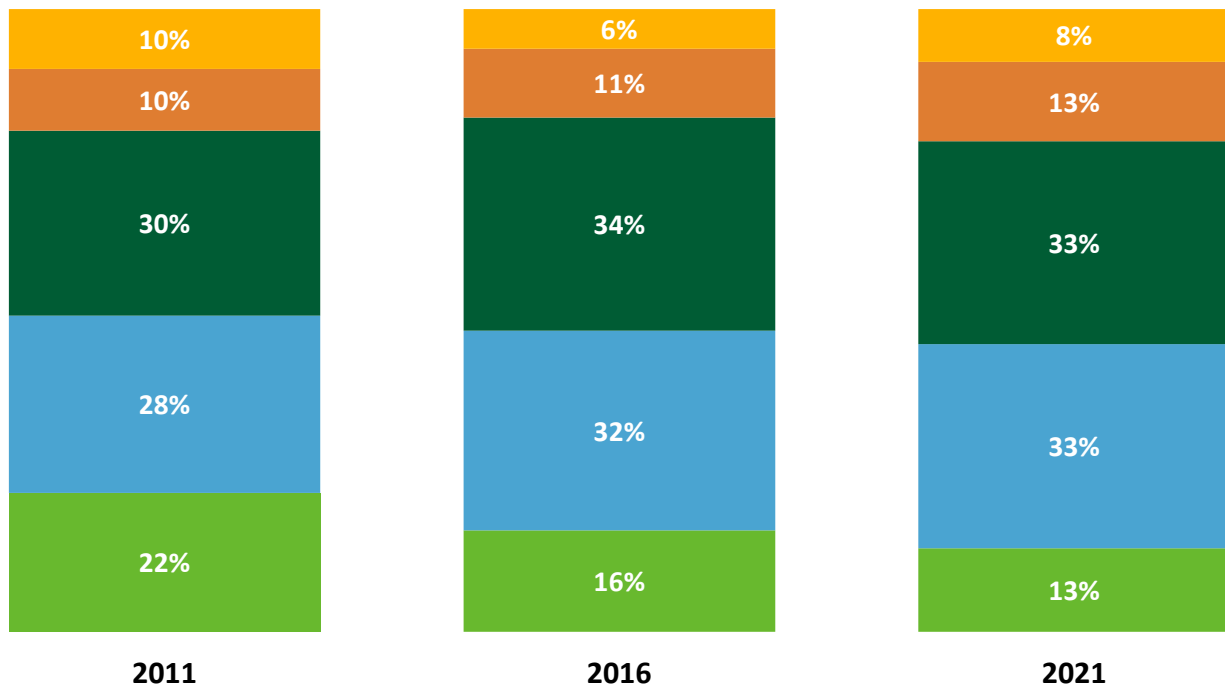
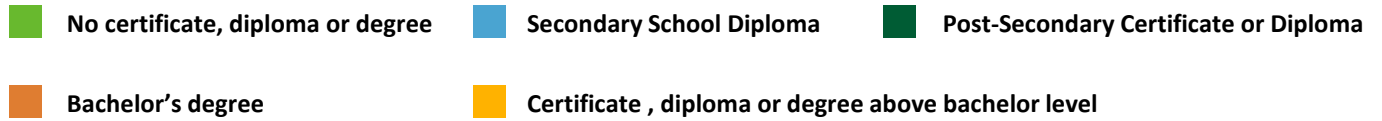
WORK FROM HOME

2011	7%
2016	13%
2021	15%



Education (How We Learn)

EDUCATIONAL ATTAINMENT





DATA SOURCE AND DISCLAIMER:

The data presented in the Chilliwack City-Wide and Neighbourhood Profiles is derived from custom census data based on the dissemination areas making up Chilliwack's neighbourhoods, inclusive of local First Nations. The data is standard indicators based on the 2011, 2016 and 2021 Census Profiles for these unique geographies.

Population counts have been corrected based on the estimated census undercount, potentially resulting in a discrepancy from the public census profile. In addition, standard census rounding and potential data suppression in smaller areas may introduce some error to the presented data.

Questions?

Phone: 604.793.2906
Email: planning@chilliwack.com

In case of an error, please contact the Planning Department so it can be corrected.