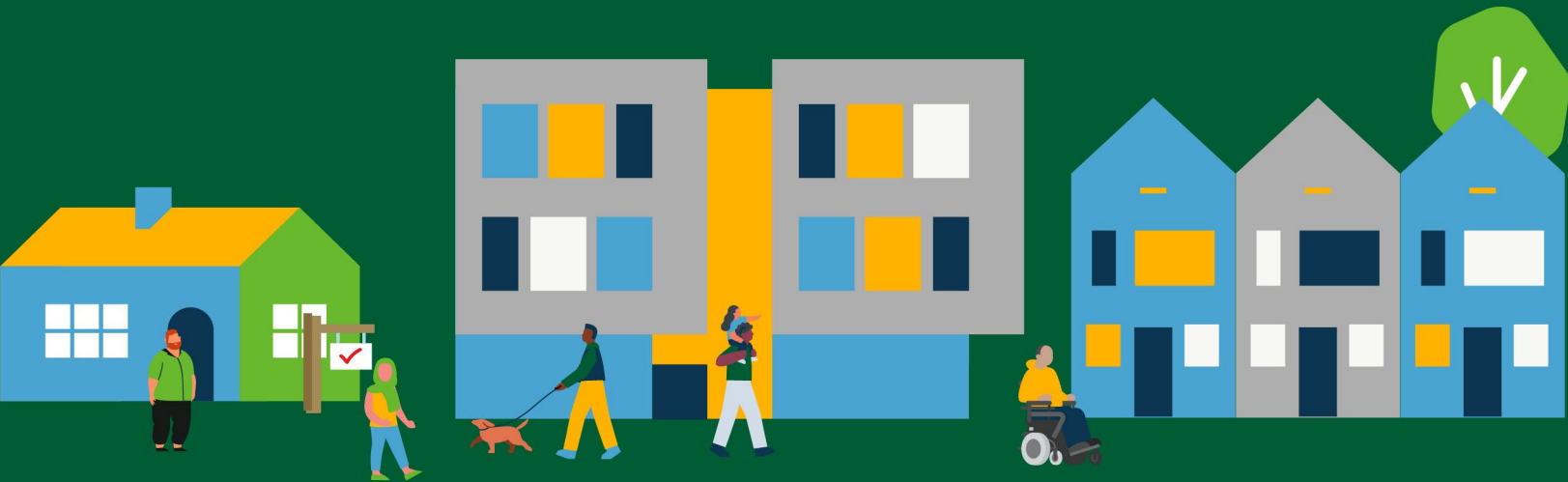
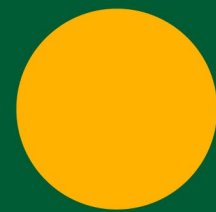




CITY OF  
**CHILLIWACK**

Promontory

# NEIGHBOURHOOD PROFILE



# Promontory

## NEIGHBOURHOOD PROFILE

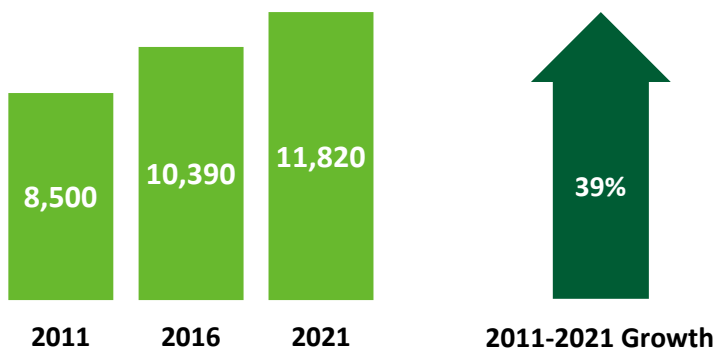


**Promontory** is a suburban neighbourhood located in the south of Chilliwack on the slopes of Promontory Hill. Predominantly residential and surrounded by forested areas, the neighbourhood offers direct access to natural spaces, and views over the City and up the Fraser Valley. Despite being the third smallest neighbourhood geographically, Promontory has the third highest population.



### Population (Who We Are)

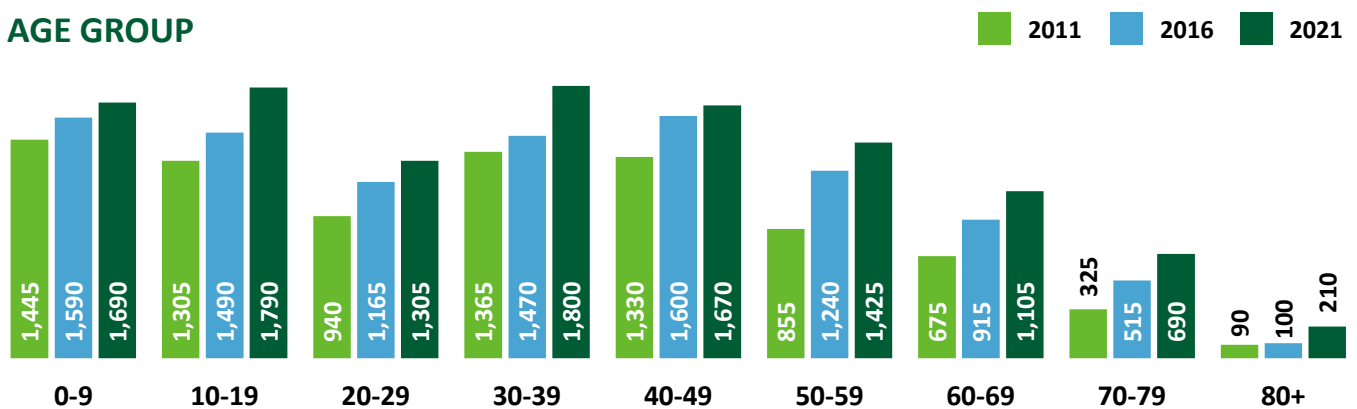
#### POPULATION TREND



Total Population

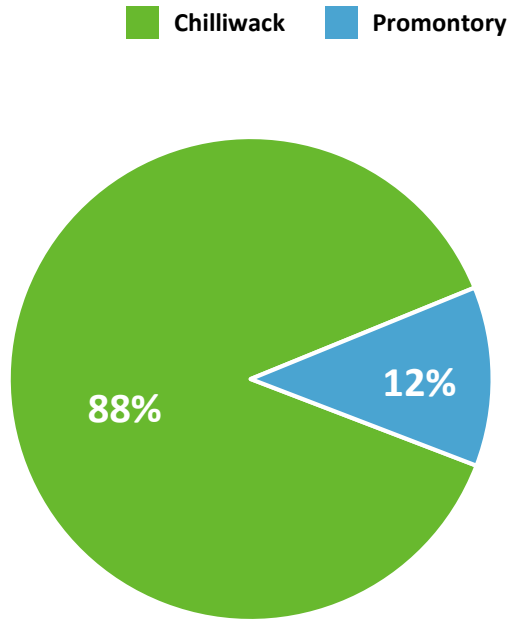


#### AGE GROUP

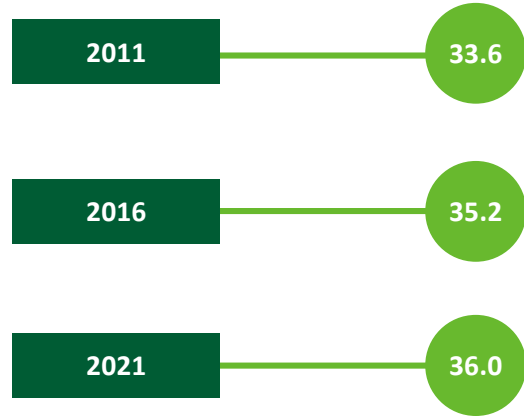


# Population (Who We Are)

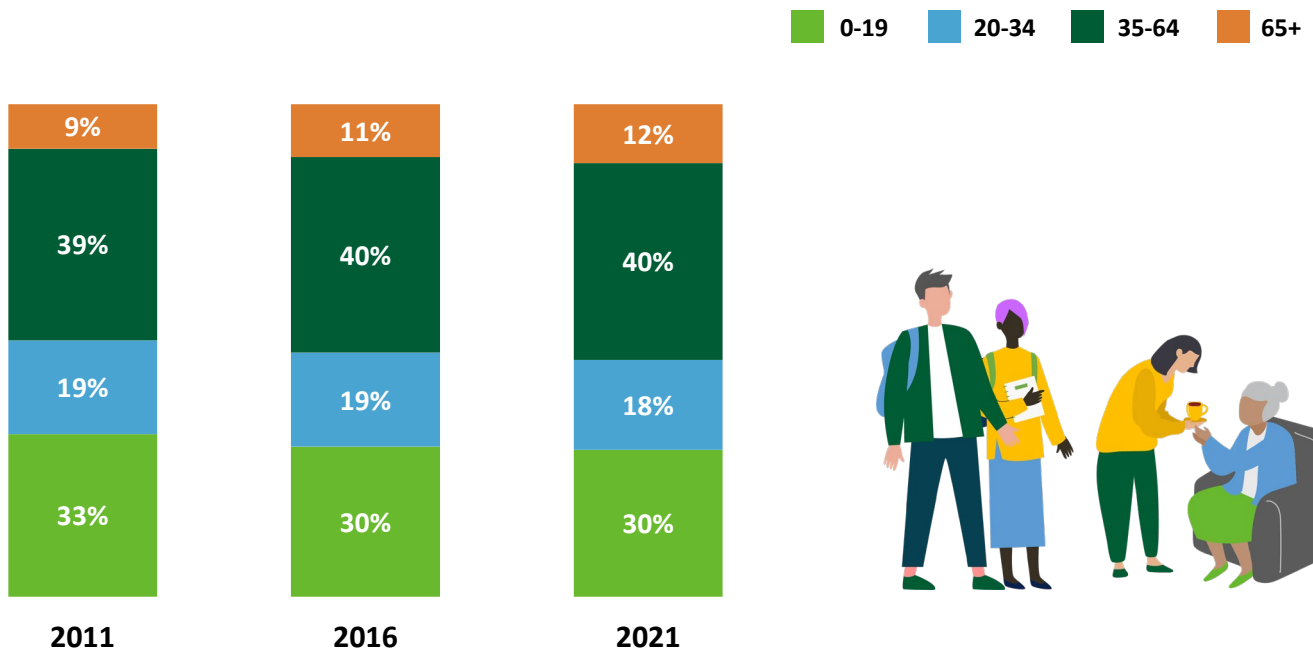
## SHARE OF CHILLIWACK POPULATION IN 2021



## MEDIAN AGE

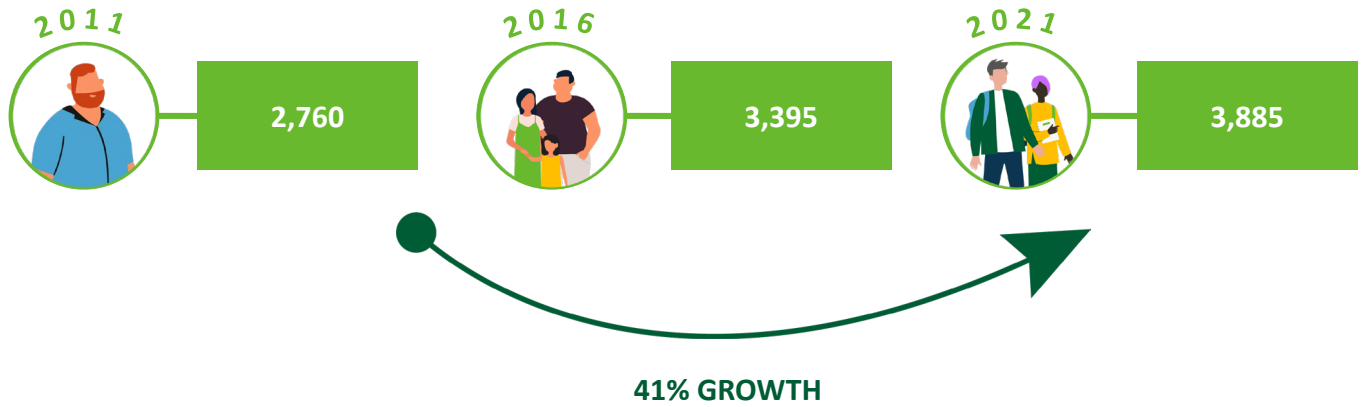


## SHARE OF POPULATION BY AGE RANGE

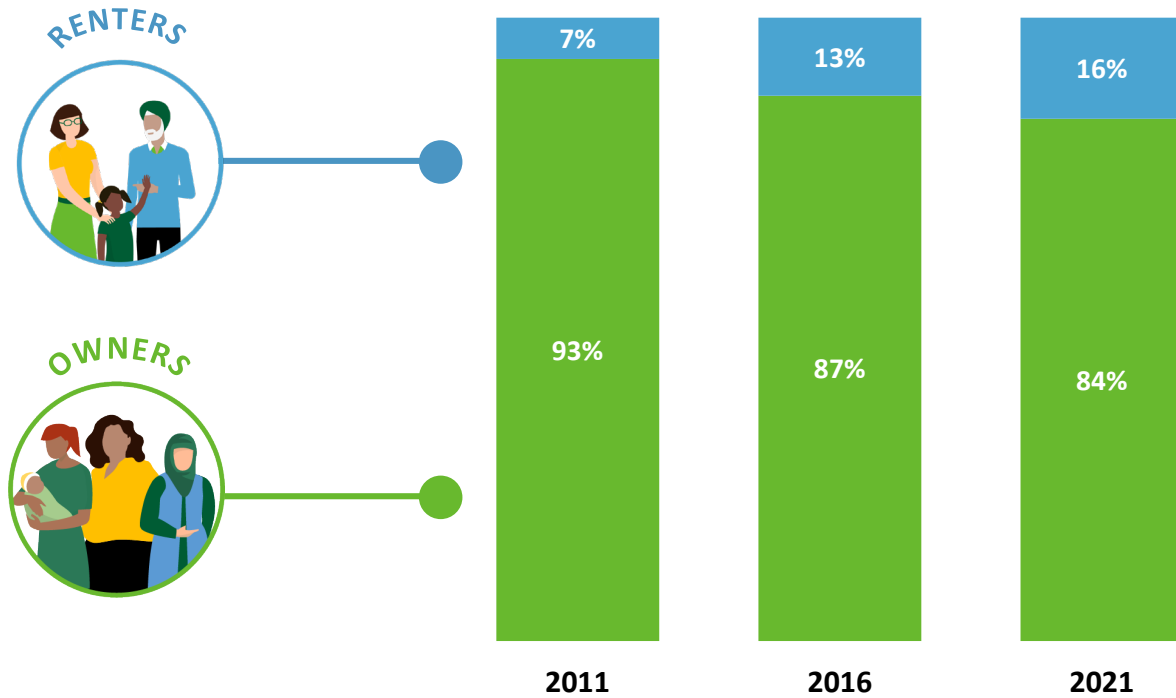


# Households (How We Live)

## NUMBER OF HOUSEHOLDS



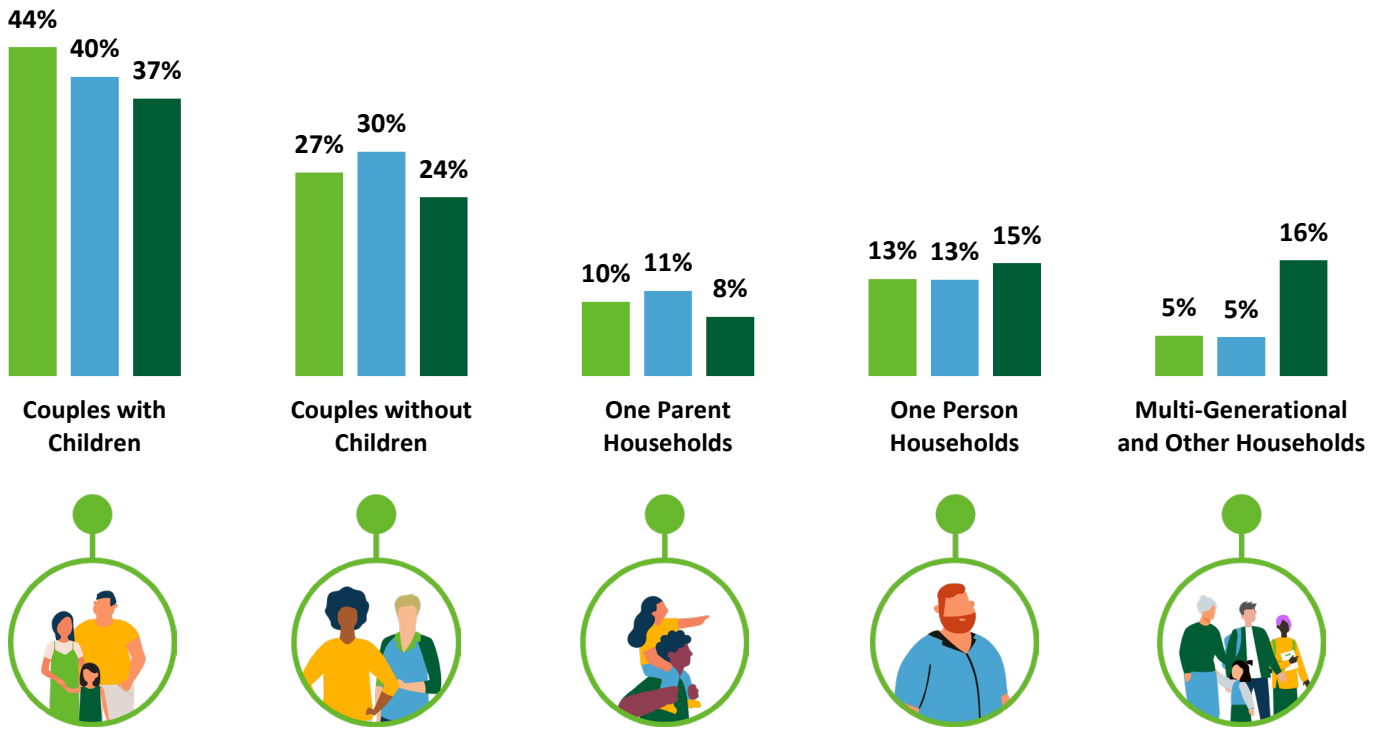
## SHARE OF HOUSEHOLDS WHO OWN OR RENT



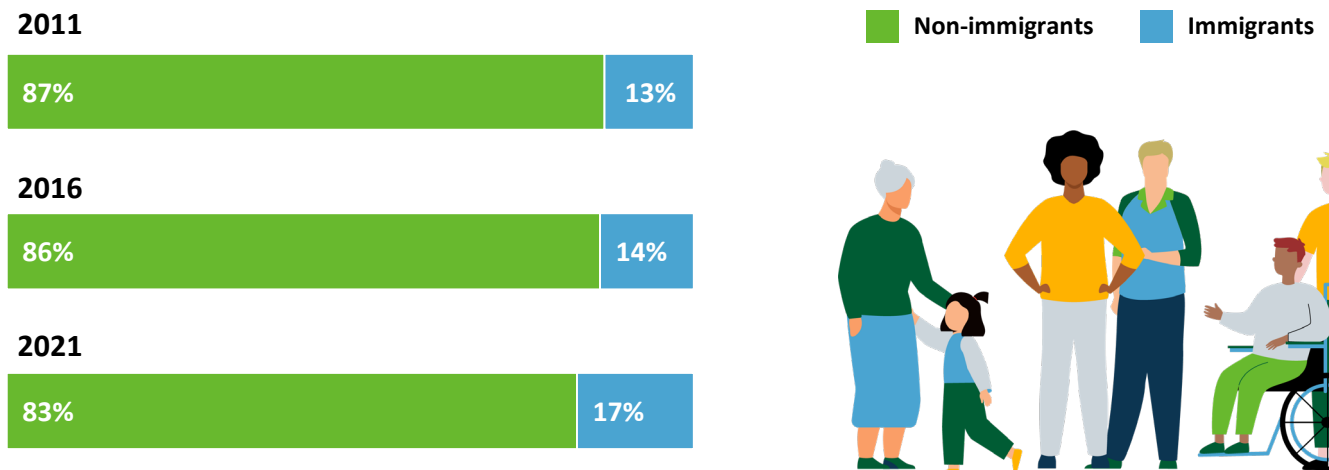
# Households (How We Live)

## HOUSEHOLD COMPOSITION

2011 2016 2021



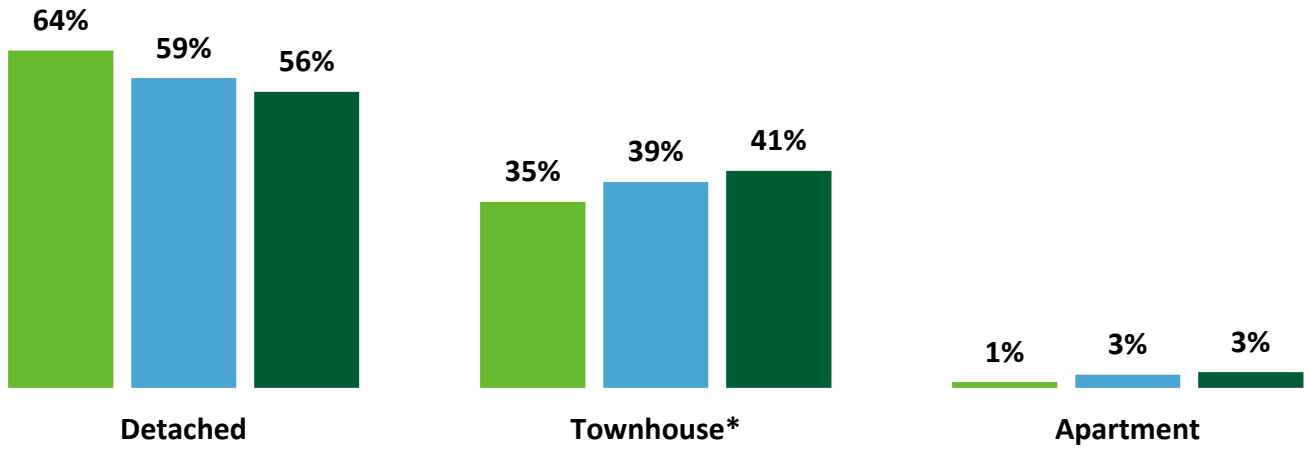
## SHARE OF HOUSEHOLDS WHO ARE IMMIGRANTS



# Dwellings (Where We Live)

## HOUSING TYPE

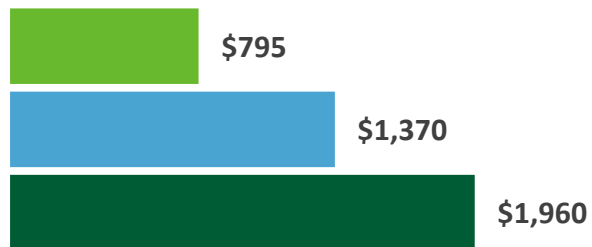
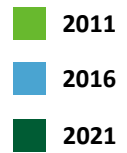
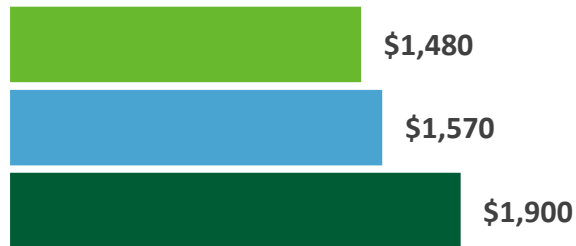
2011 2016 2021



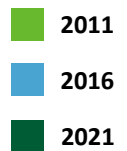
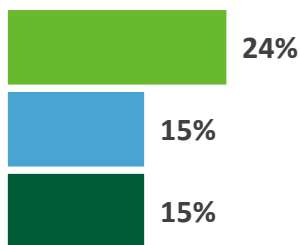
\* Includes duplex & detached with suite

# Dwellings (Where We Live)

## MONTHLY SHELTER COST (MEDIAN)

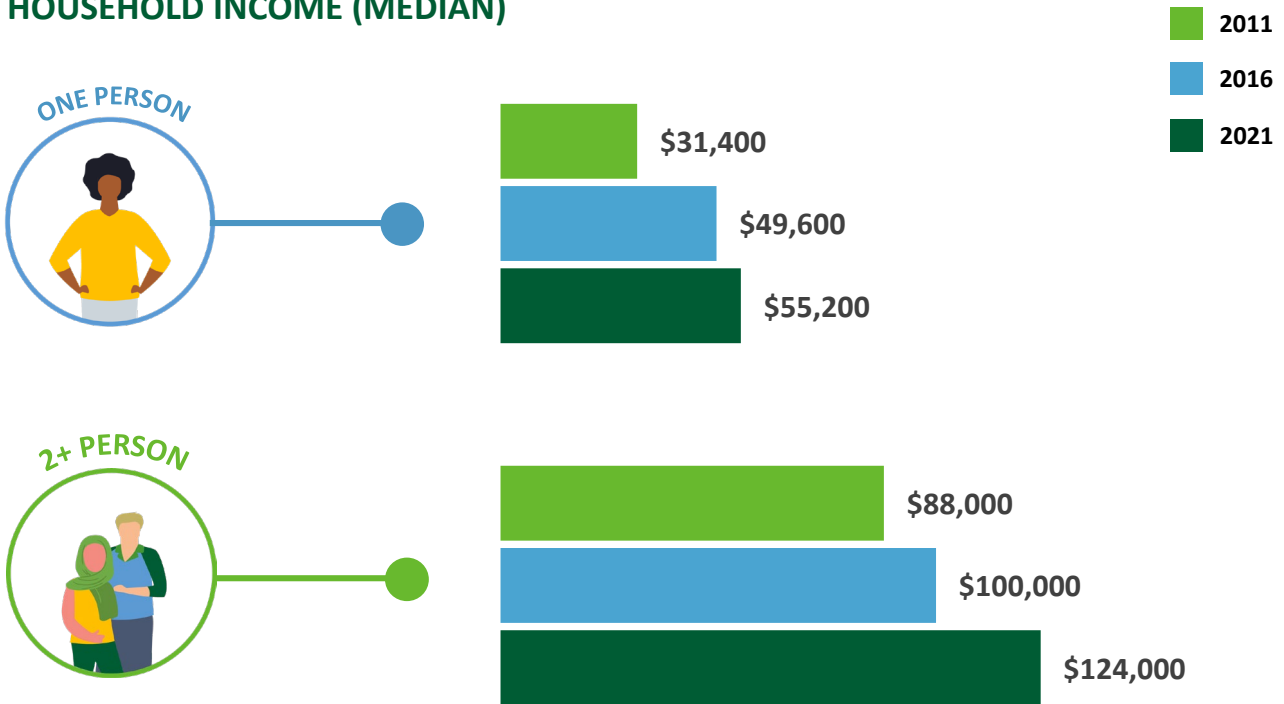


## SHARE OF HOUSEHOLDS SPENDING 30%+ OF INCOME ON HOUSING

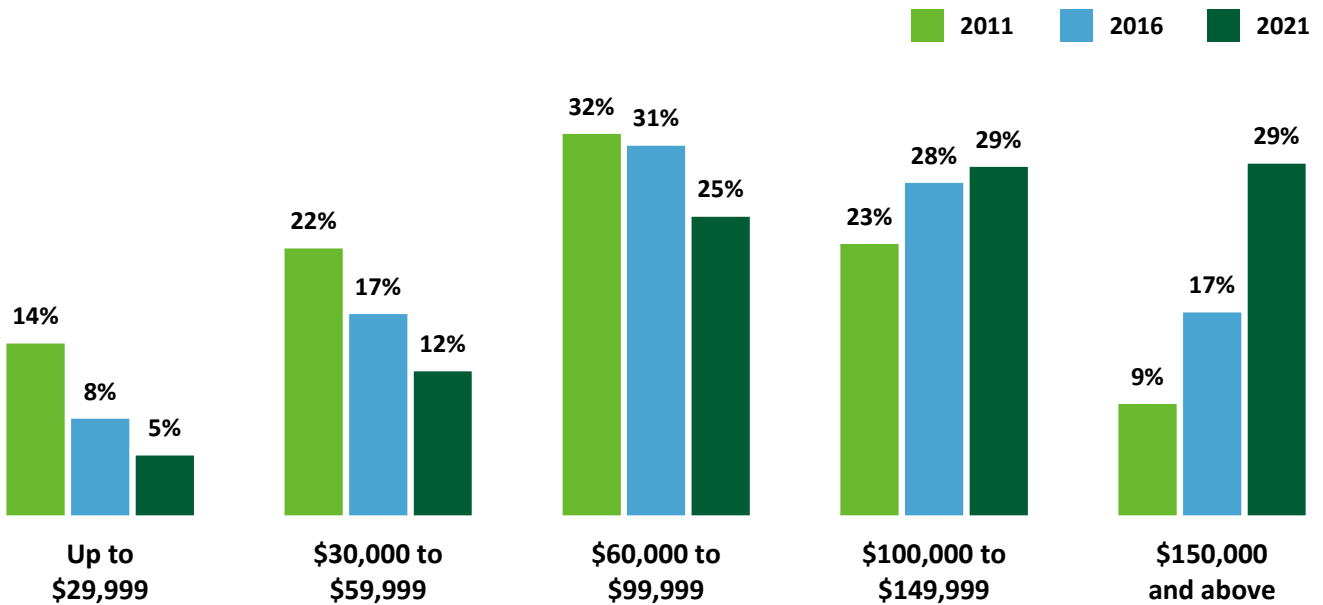


# Income (How Much We Make)

## HOUSEHOLD INCOME (MEDIAN)



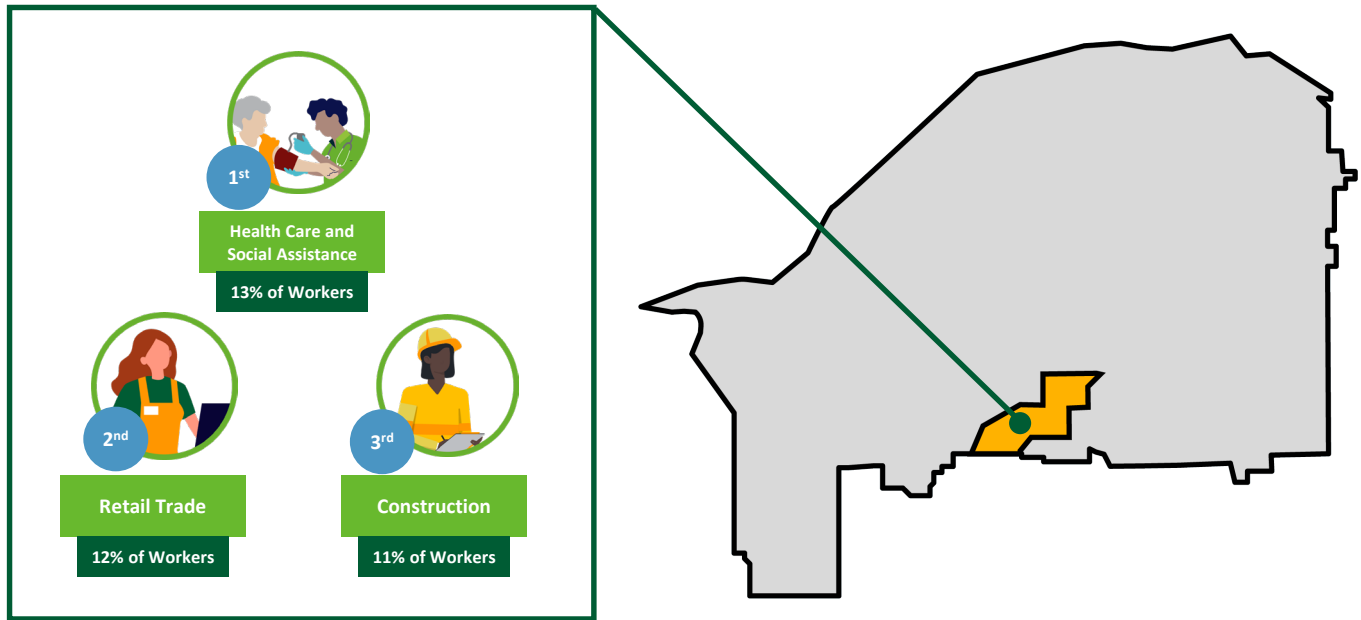
## SHARE OF HOUSEHOLDS BY INCOME RANGE



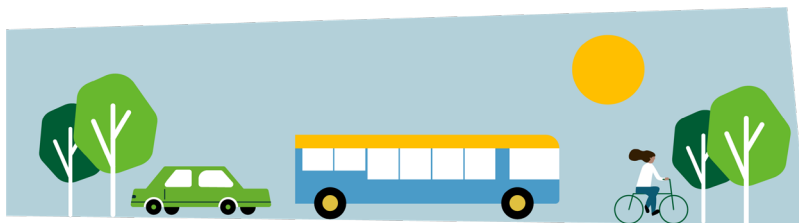


# Employment (How We Work)

## TOP INDUSTRIES



## COMMUTE MODE



	Car	Transit	Bicycle, walk or other
2011	94%	2%	4%
2016	95%	1%	4%
2021	93%	1%	6%

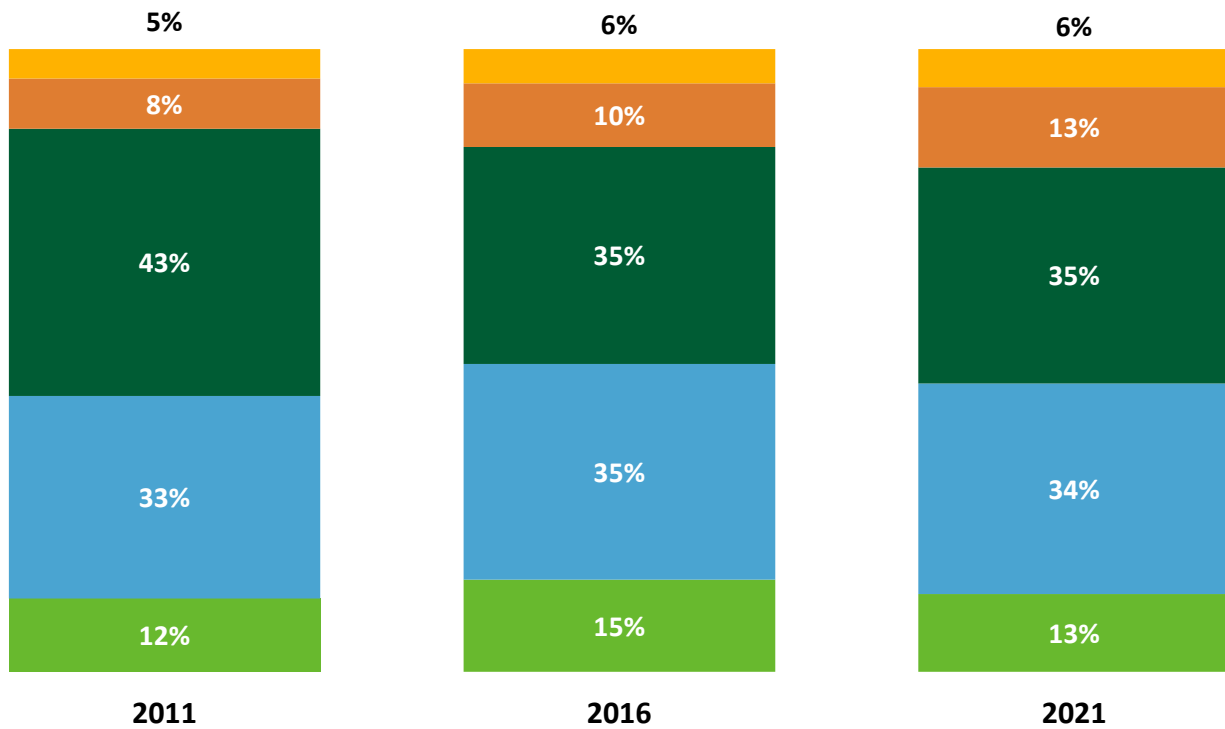
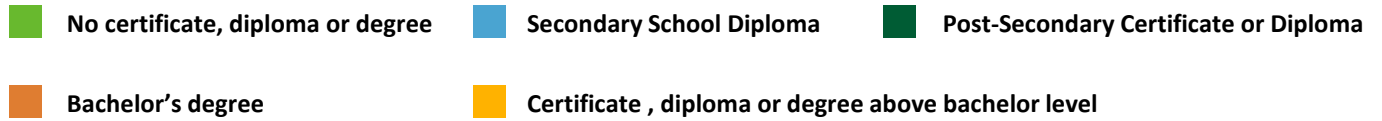
## WORK FROM HOME

2011	5%
2016	7%
2021	17%



# Education (How We Learn)

## EDUCATIONAL ATTAINMENT





#### **DATA SOURCE AND DISCLAIMER:**

The data presented in the Chilliwack City-Wide and Neighbourhood Profiles is derived from custom census data based on the dissemination areas making up Chilliwack's neighbourhoods, inclusive of local First Nations. The data is standard indicators based on the 2011, 2016 and 2021 Census Profiles for these unique geographies.

Population counts have been corrected based on the estimated census undercount, potentially resulting in a discrepancy from the public census profile. In addition, standard census rounding and potential data suppression in smaller areas may introduce some error to the presented data.

#### **Questions?**

Phone: 604.793.2906  
Email: [planning@chilliwack.com](mailto:planning@chilliwack.com)

In case of an error, please contact the Planning Department so it can be corrected.