



CITY OF
CHILLIWACK

Rosedale

NEIGHBOURHOOD PROFILE



Rosedale

NEIGHBOURHOOD PROFILE

Includes Schelowat and Grass First Nations

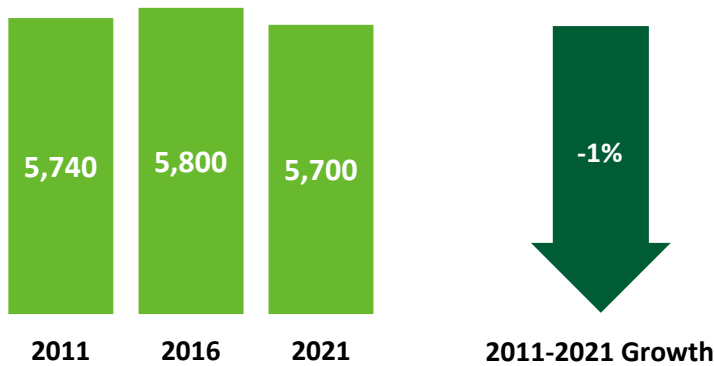


Rosedale is the largest neighbourhood in Chilliwack geographically – nearly twice the size of the next biggest – and includes the Schelowat and Grass First Nations. Bisected by Highway 1, it stretches from the Fraser River to the north, to the base of where the Eastern Hillside neighbourhood starts. Predominantly farmland, the area is sparsely populated, with less than 6% of the City’s population.



Population (Who We Are)

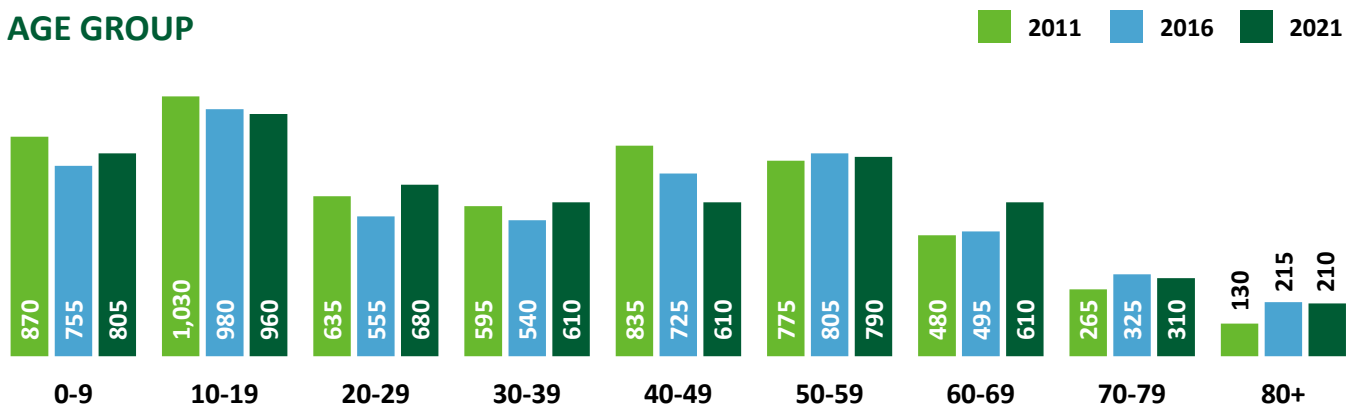
POPULATION TREND



Total Population

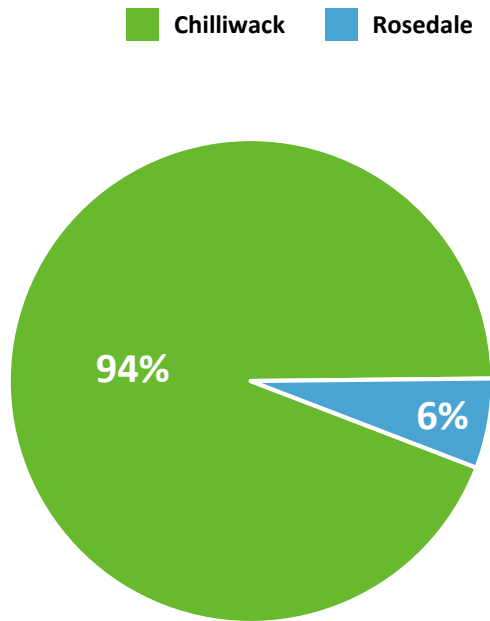


AGE GROUP

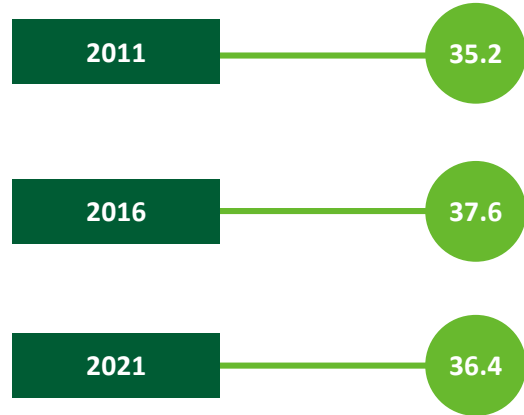


Population (Who We Are)

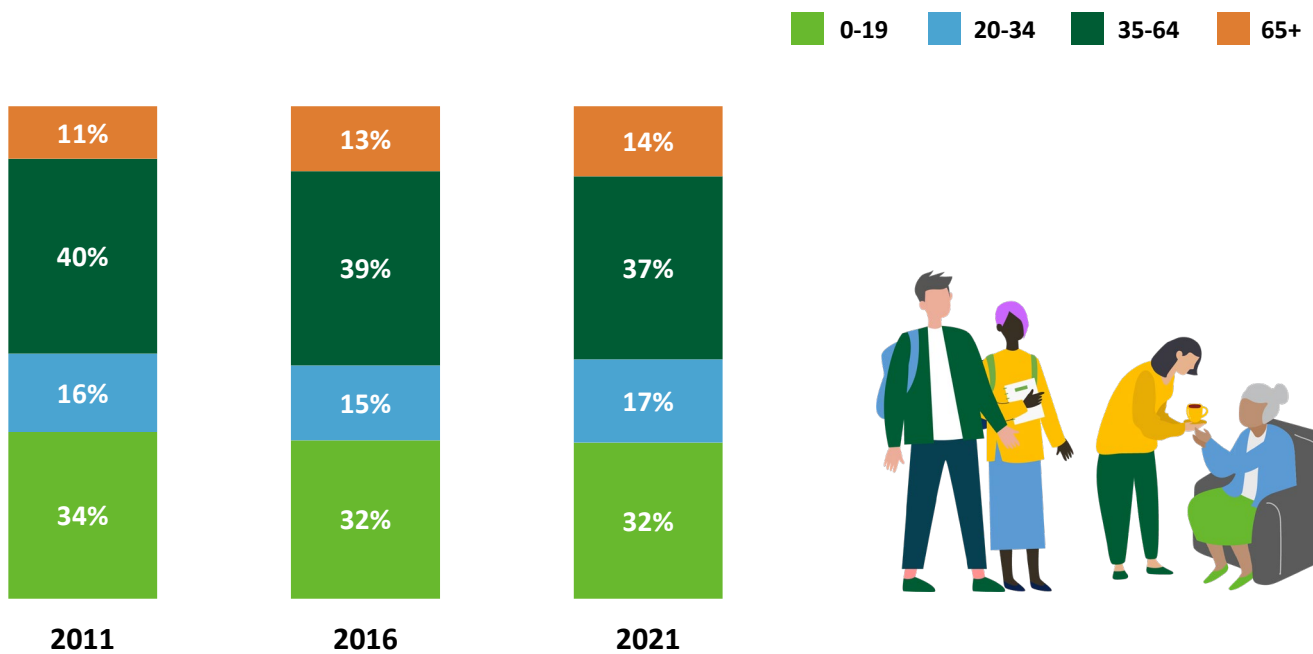
SHARE OF CHILLIWACK POPULATION IN 2021



MEDIAN AGE

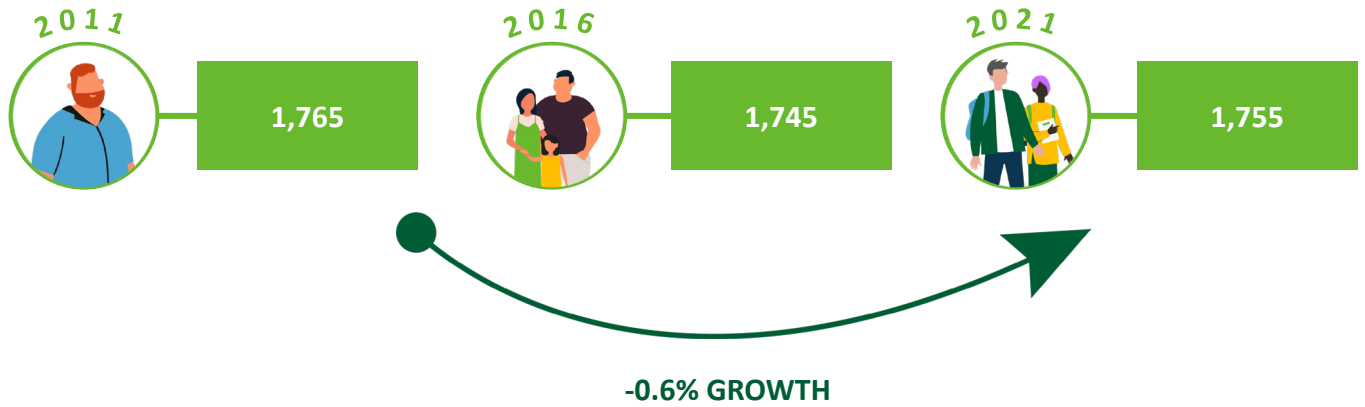


SHARE OF POPULATION BY AGE RANGE

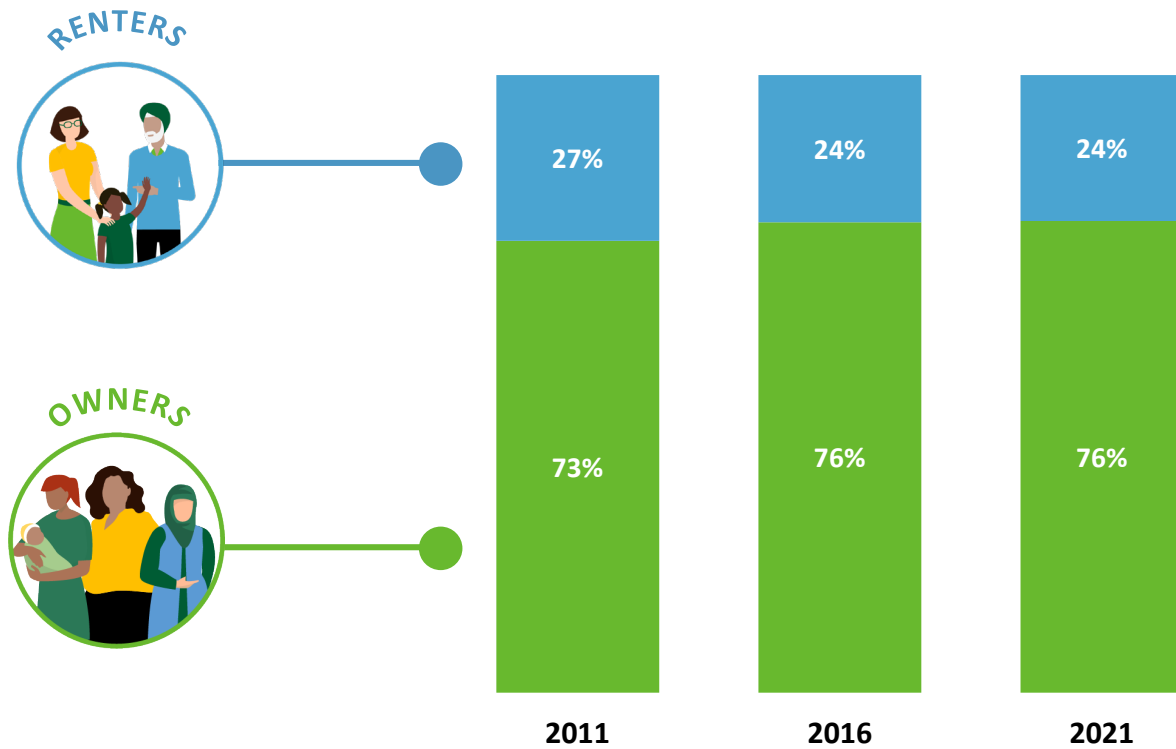


Households (How We Live)

NUMBER OF HOUSEHOLDS



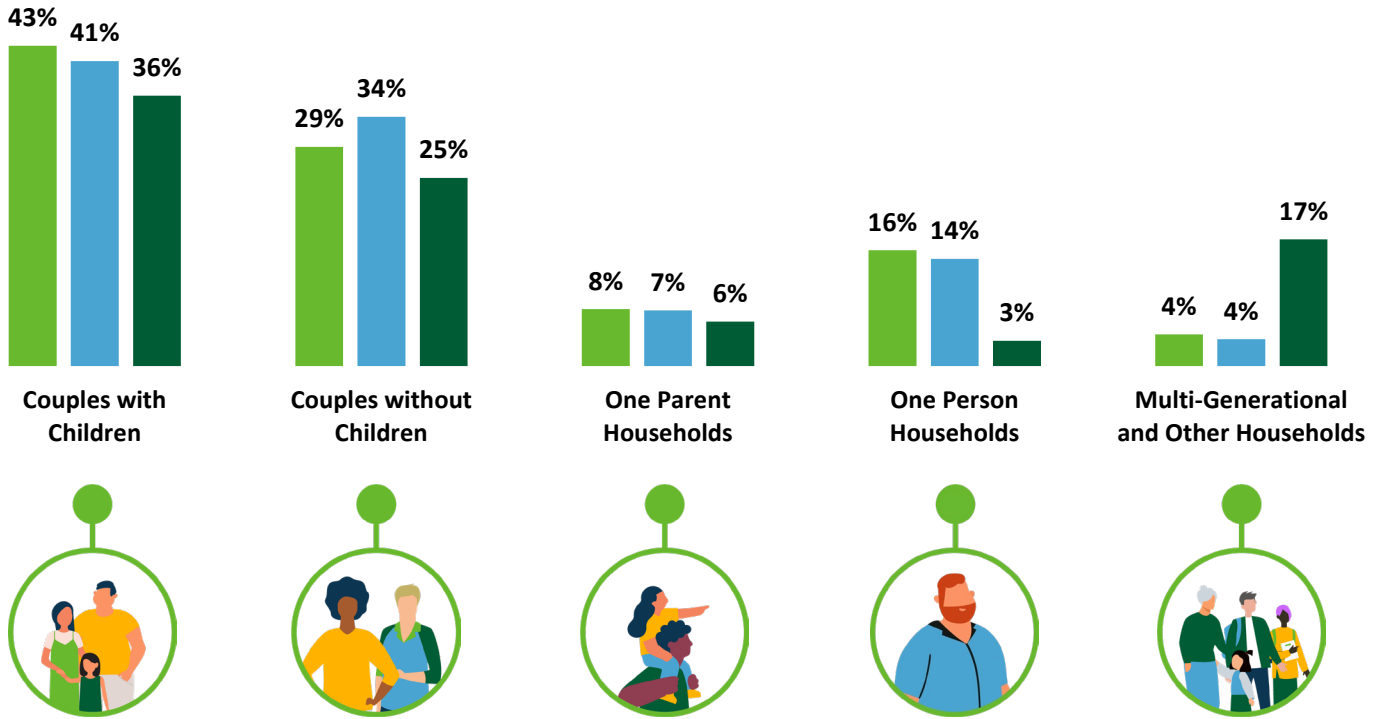
SHARE OF HOUSEHOLDS WHO OWN OR RENT



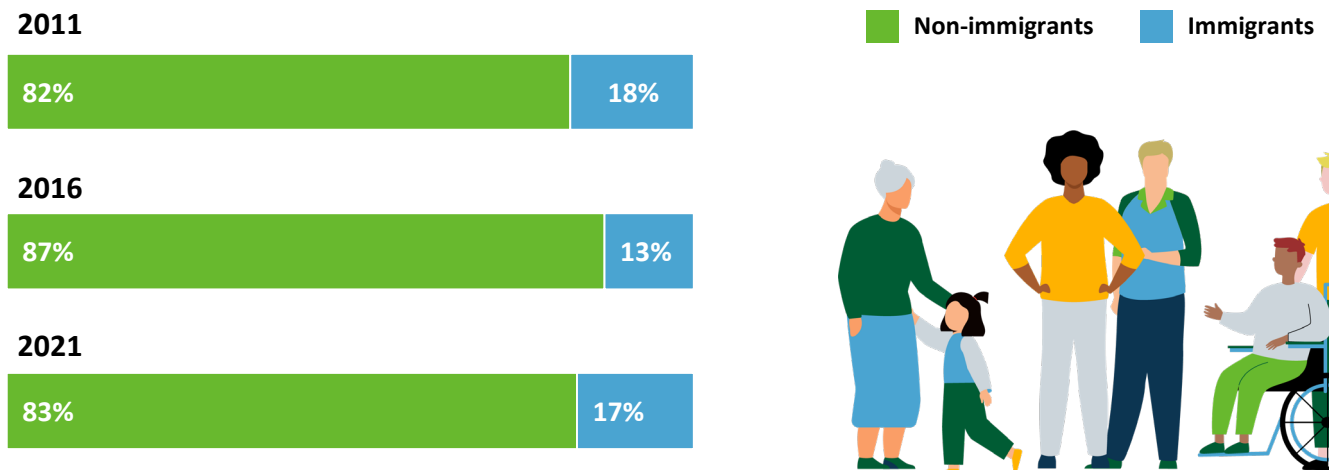
Households (How We Live)

HOUSEHOLD COMPOSITION

2011 2016 2021



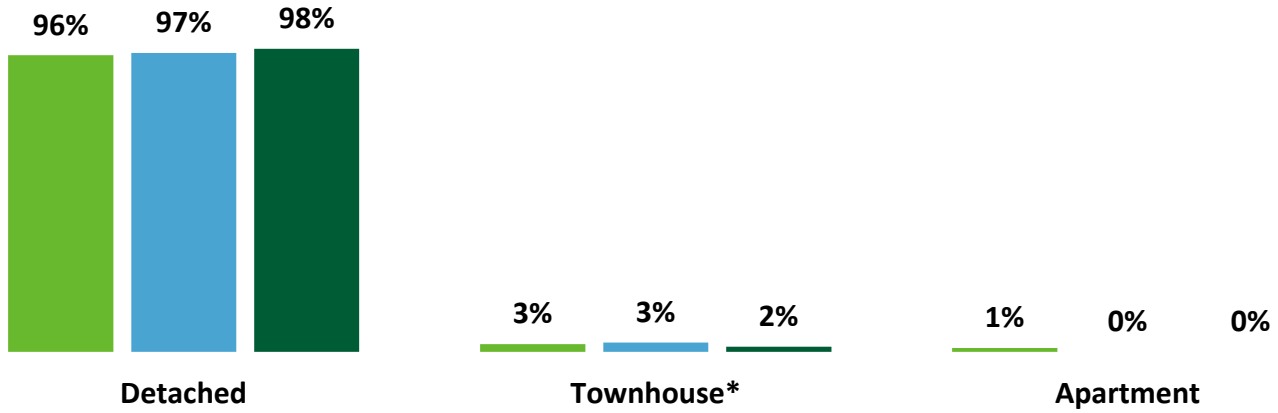
SHARE OF HOUSEHOLDS WHO ARE IMMIGRANTS



Dwellings (Where We Live)

HOUSING TYPE

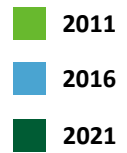
2011 2016 2021



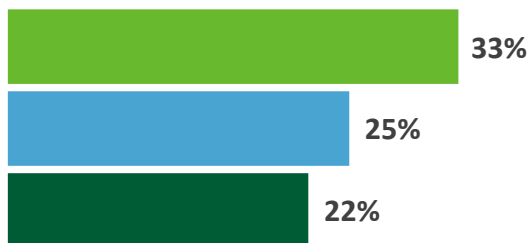
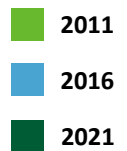
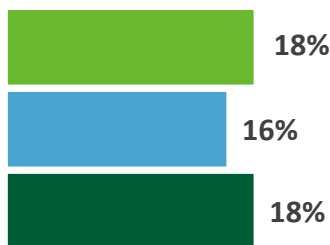
* Includes duplex & detached with suite

Dwellings (Where We Live)

MONTHLY SHELTER COST (MEDIAN)

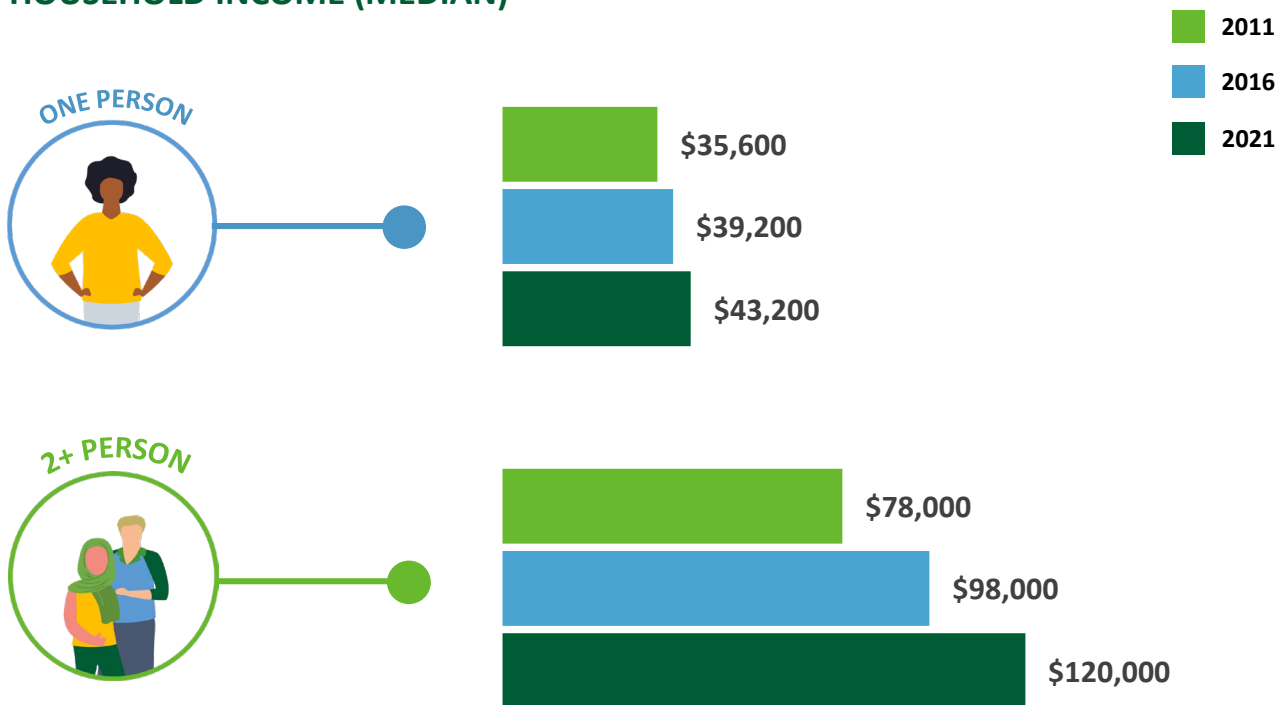


SHARE OF HOUSEHOLDS SPENDING 30%+ OF INCOME ON HOUSING

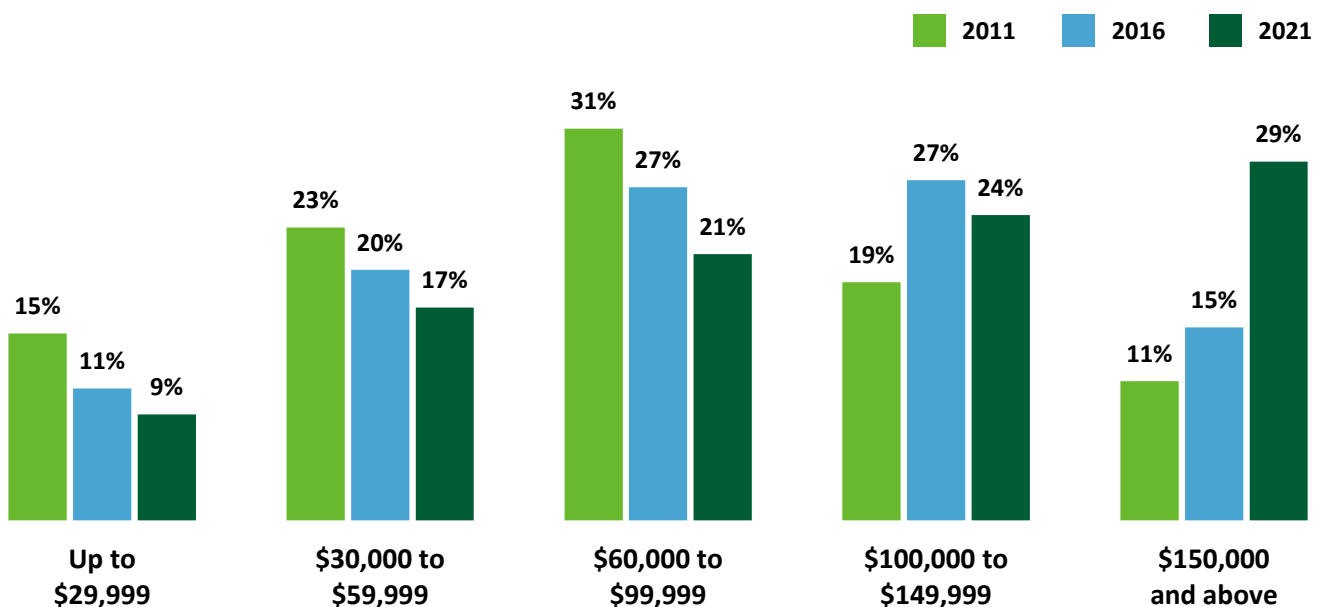


Income (How Much We Make)

HOUSEHOLD INCOME (MEDIAN)

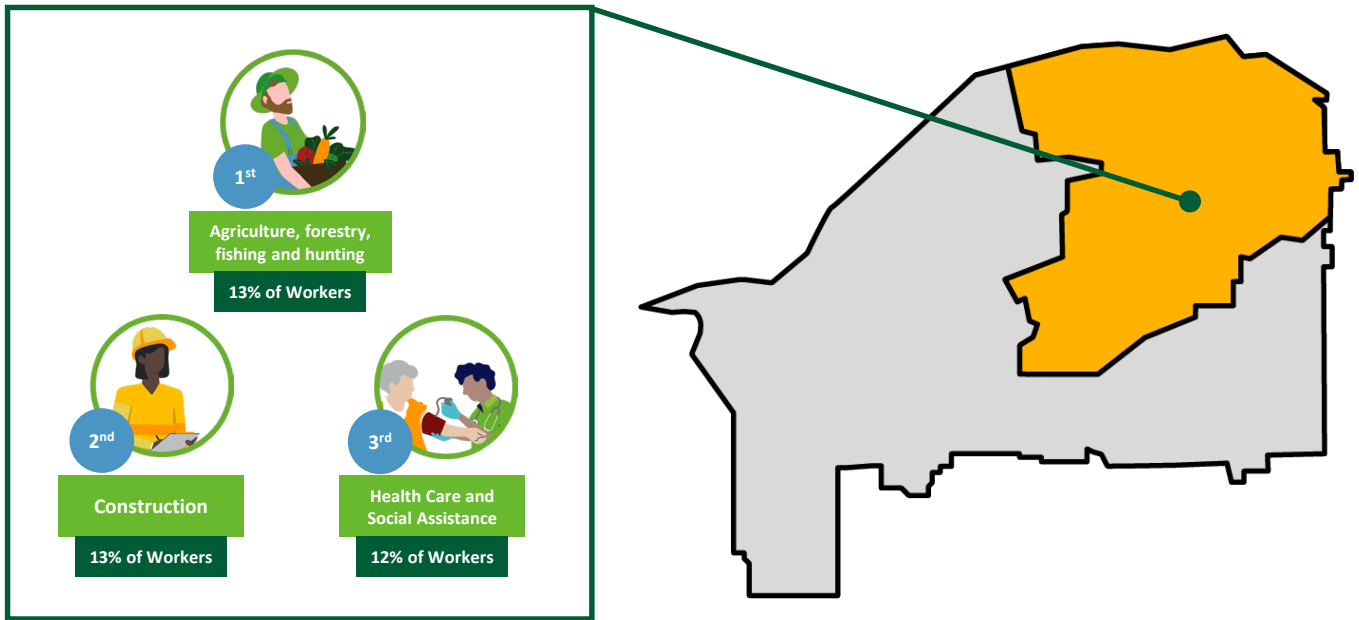


SHARE OF HOUSEHOLDS BY INCOME RANGE

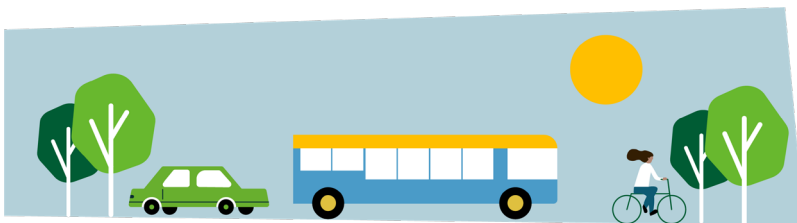


Employment (How We Work)

TOP INDUSTRIES



COMMUTE MODE



	Car	Transit	Bicycle, walk or other
2011	89%	1%	10%
2016	88%	1%	11%
2021	87%	1%	12%

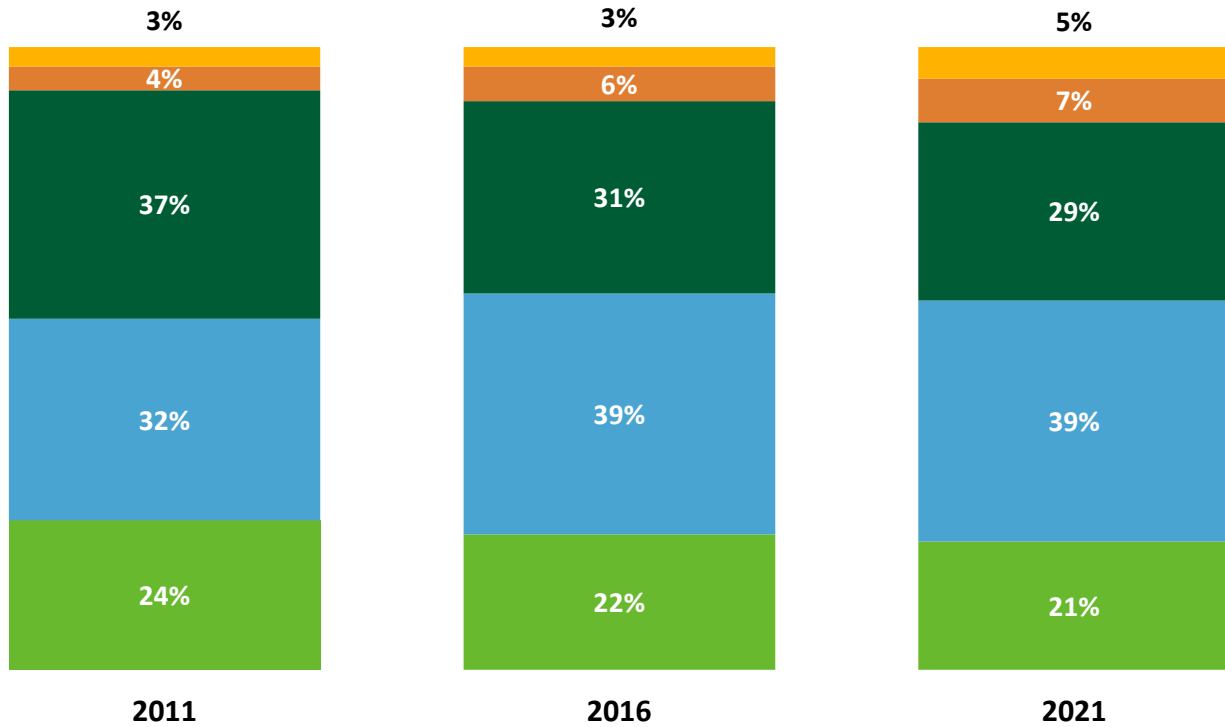
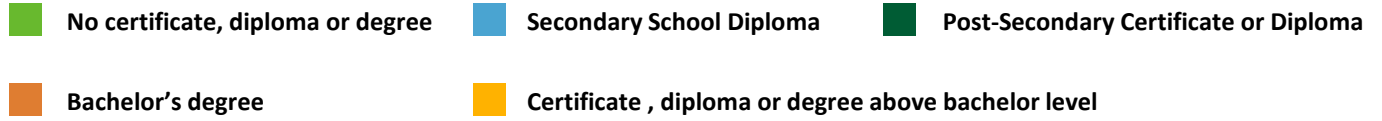
WORK FROM HOME

2011	21%
2016	25%
2021	30%



Education (How We Learn)

EDUCATIONAL ATTAINMENT





DATA SOURCE AND DISCLAIMER:

The data presented in the Chilliwack City-Wide and Neighbourhood Profiles is derived from custom census data based on the dissemination areas making up Chilliwack's neighbourhoods, inclusive of local First Nations. The data is standard indicators based on the 2011, 2016 and 2021 Census Profiles for these unique geographies.

Population counts have been corrected based on the estimated census undercount, potentially resulting in a discrepancy from the public census profile. In addition, standard census rounding and potential data suppression in smaller areas may introduce some error to the presented data.

Questions?

Phone: 604.793.2906
Email: planning@chilliwack.com

In case of an error, please contact the Planning Department so it can be corrected.