



CITY OF
CHILLIWACK

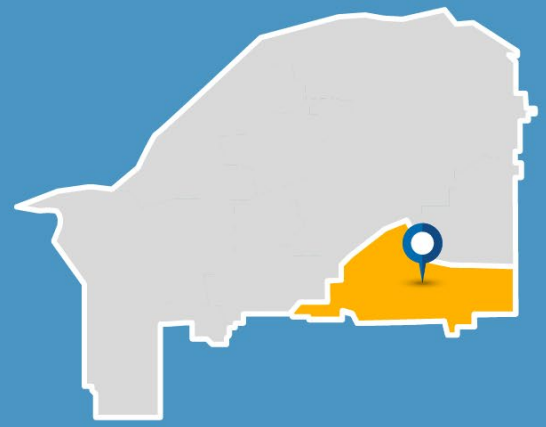
Ryder Lake

NEIGHBOURHOOD PROFILE



Ryder Lake

NEIGHBOURHOOD PROFILE

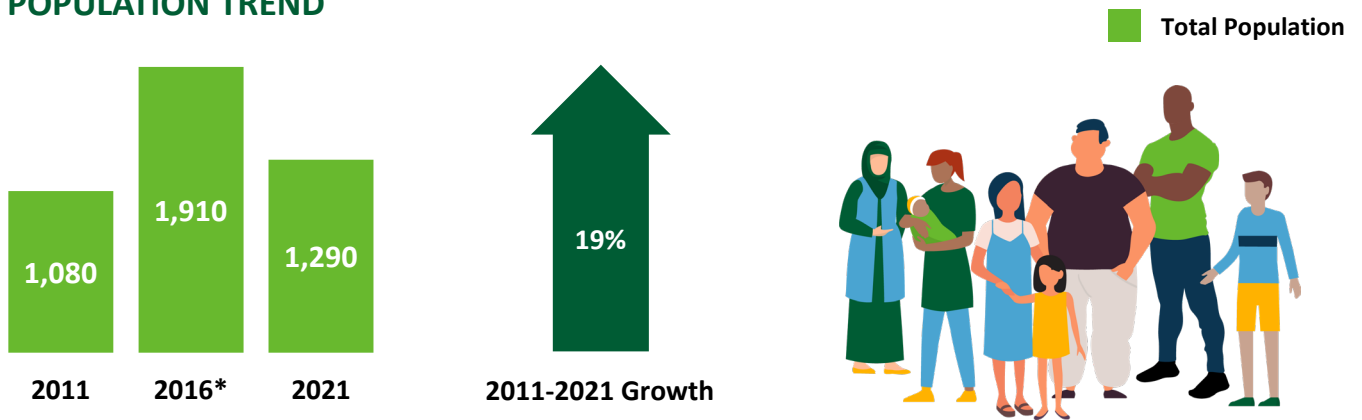


Ryder Lake is a rural, historic farming neighbourhood in southeast Chilliwack, nestled between Mount Thom, Elk Mountain, and the Chilliwack River valley. With the second fewest residents of Chilliwack's neighbourhoods across a relatively large area, it has a low population density. Being one of the most remote neighbourhood in the City, it remains largely undeveloped, with large forested areas, hiking trails and the eponymous Ryder Lake.



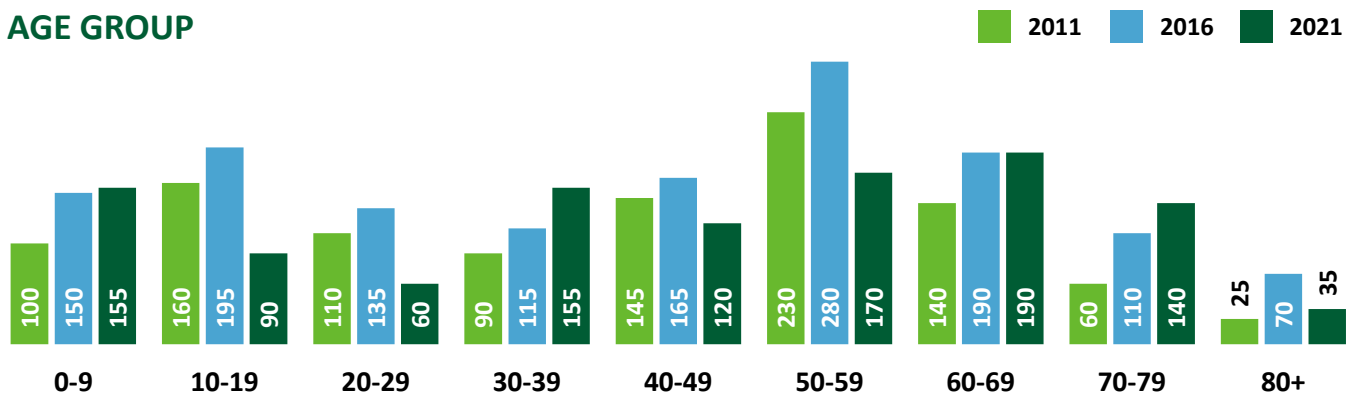
Population (Who We Are)

POPULATION TREND



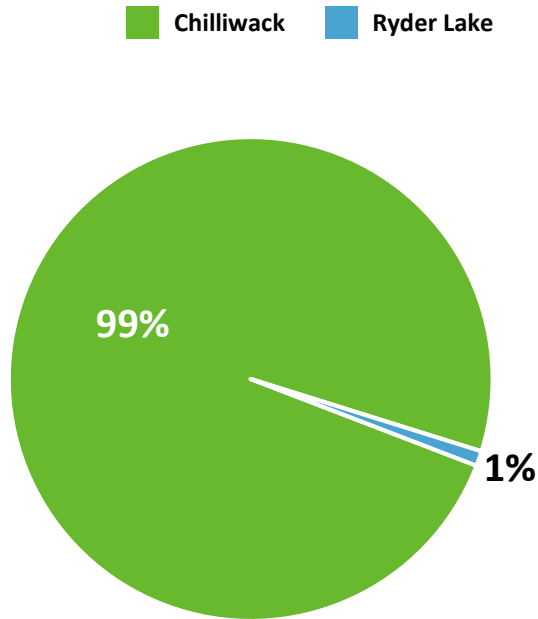
* The population change in 2016 may be due to growth allocation discrepancies from Statistics Canada data. The 2011 and 2021 population data, as shown, is more accurate.

AGE GROUP

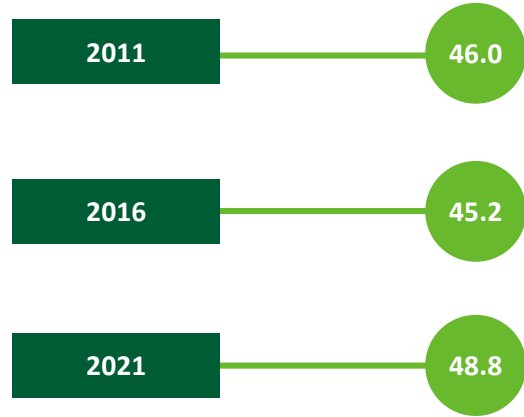


Population (Who We Are)

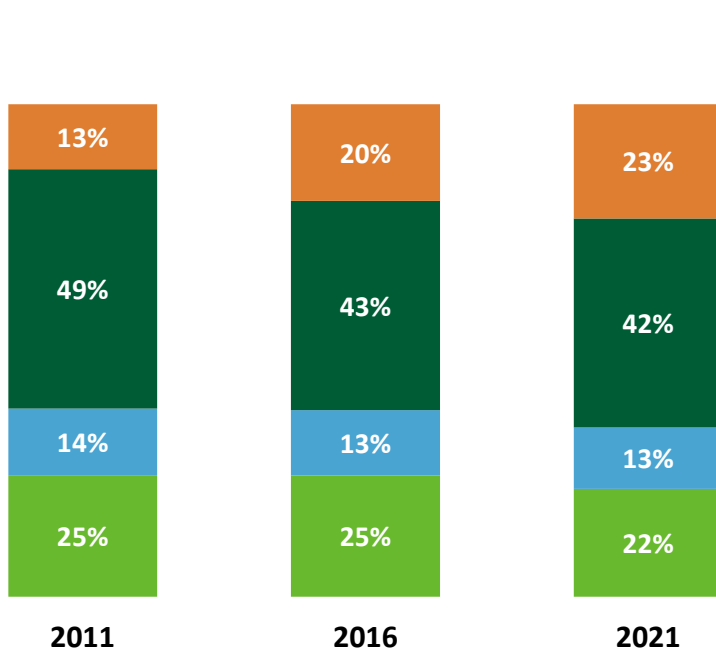
SHARE OF CHILLIWACK POPULATION IN 2021



MEDIAN AGE

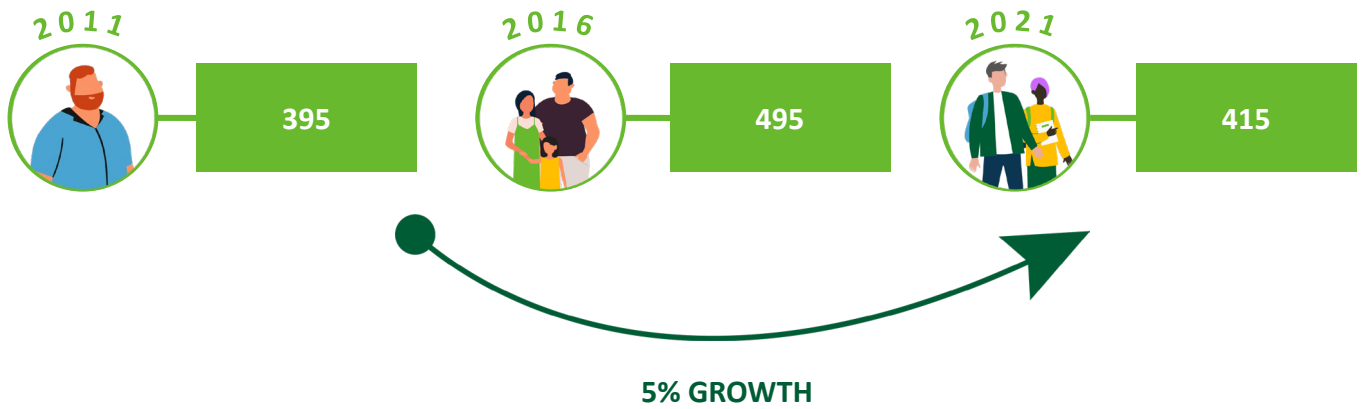


SHARE OF POPULATION BY AGE RANGE

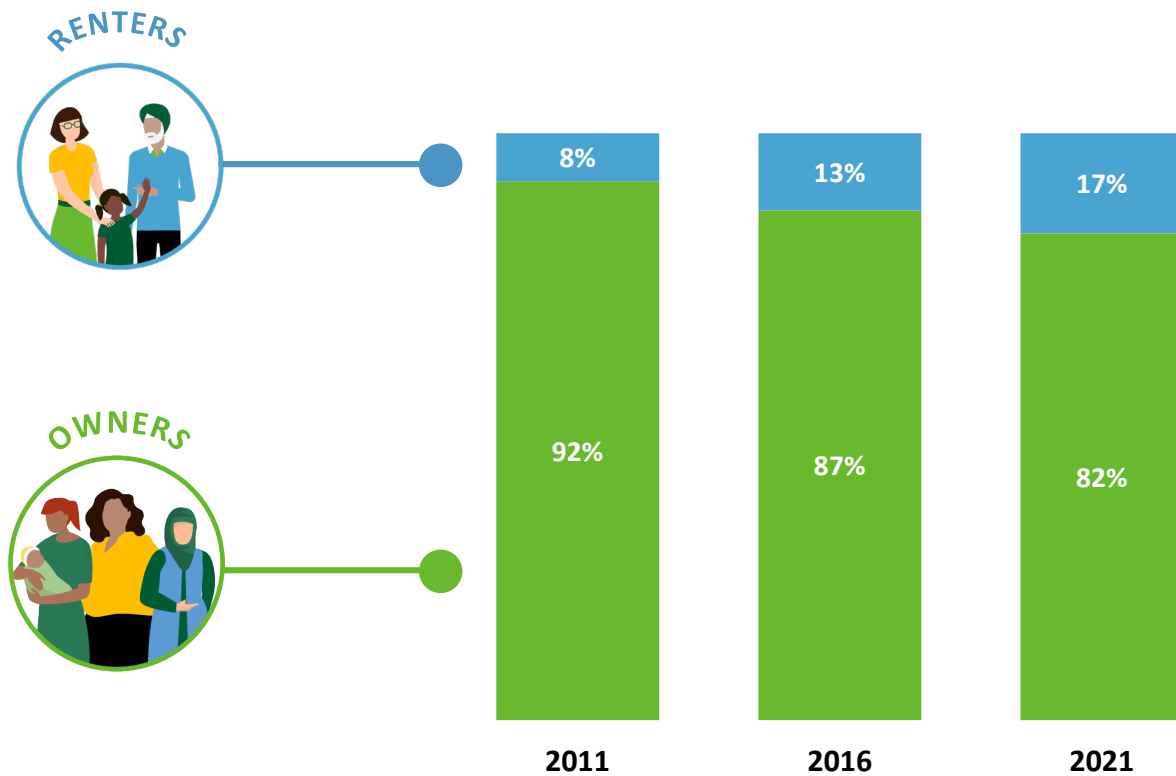


Households (How We Live)

NUMBER OF HOUSEHOLDS



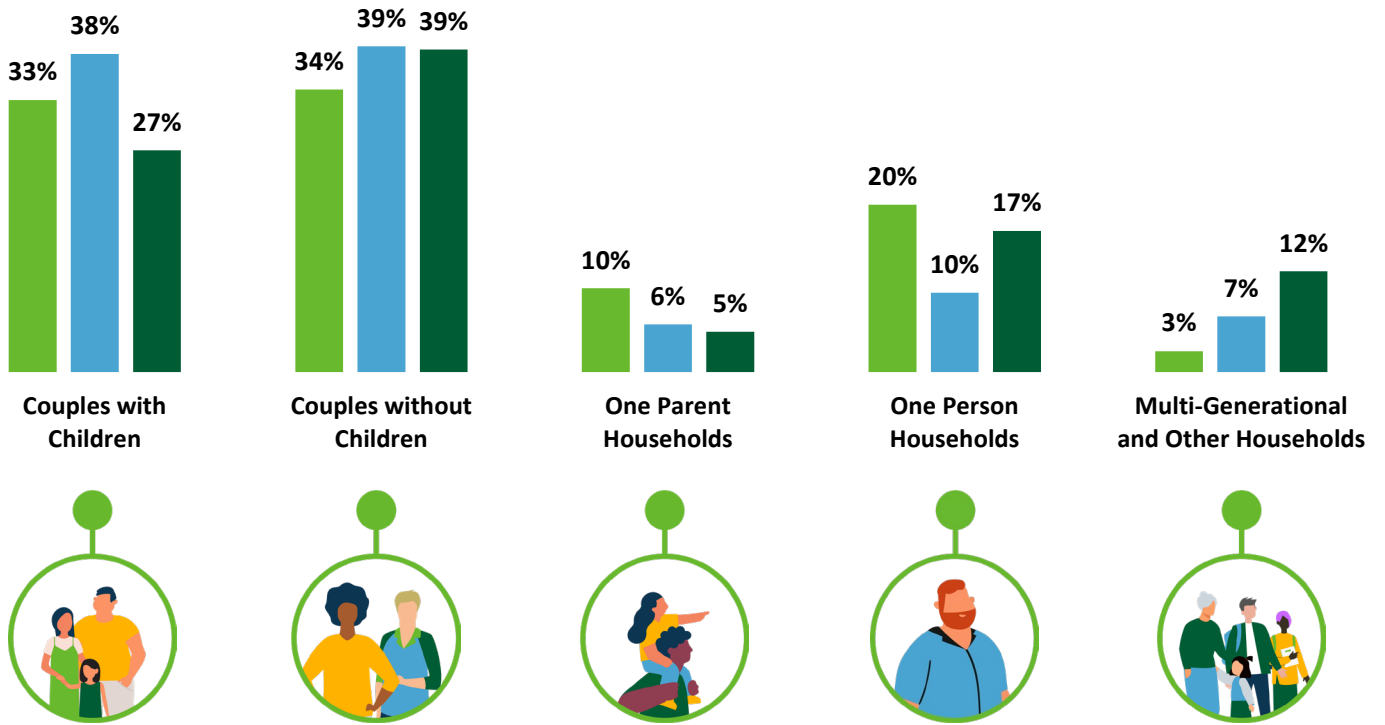
SHARE OF HOUSEHOLDS WHO OWN OR RENT



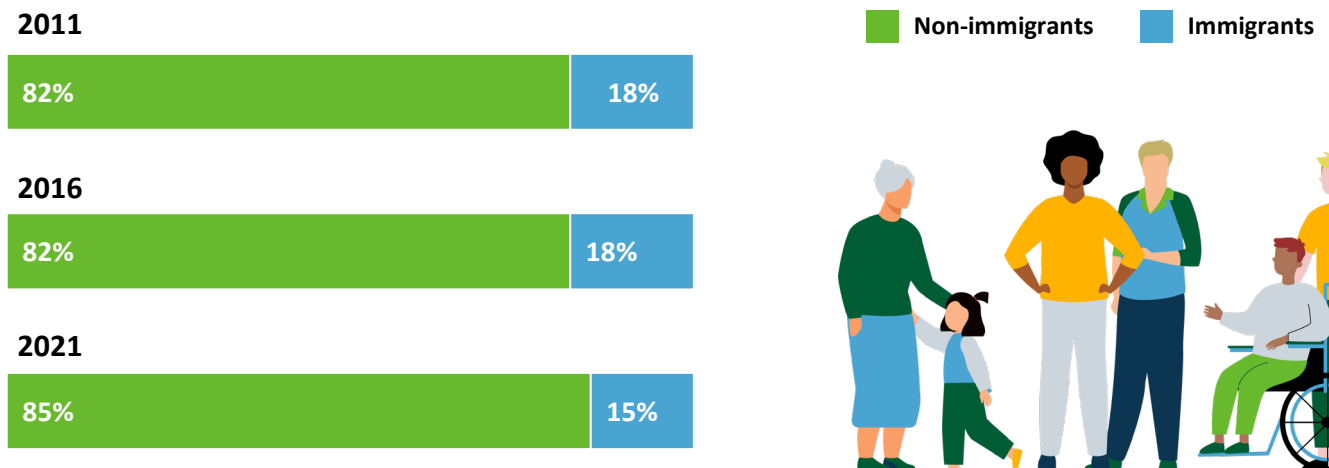
Households (How We Live)

HOUSEHOLD COMPOSITION

2011 2016 2021



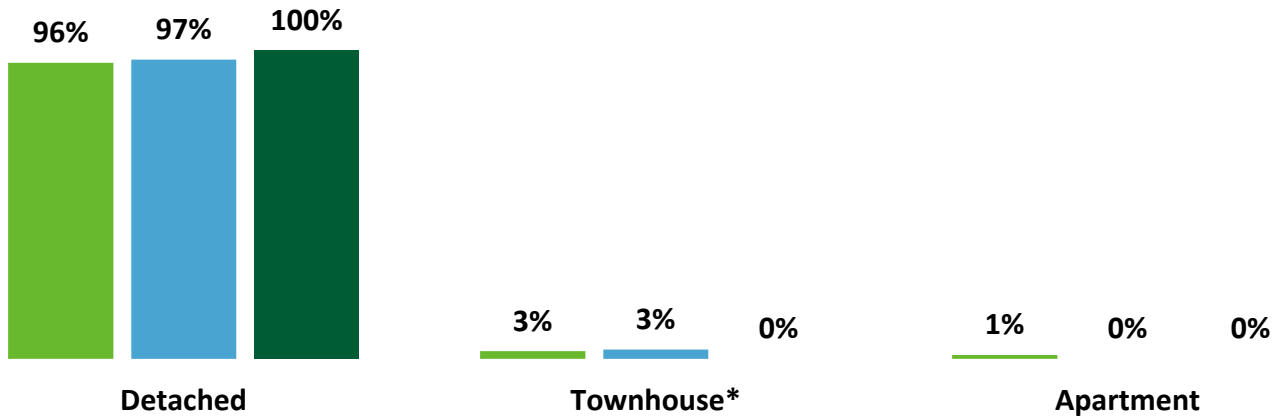
SHARE OF HOUSEHOLDS WHO ARE IMMIGRANTS



Dwellings (Where We Live)

HOUSING TYPE

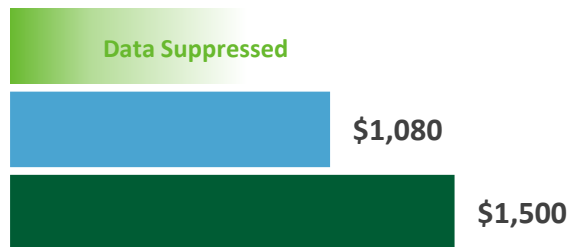
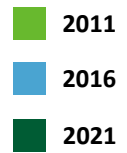
2011 2016 2021



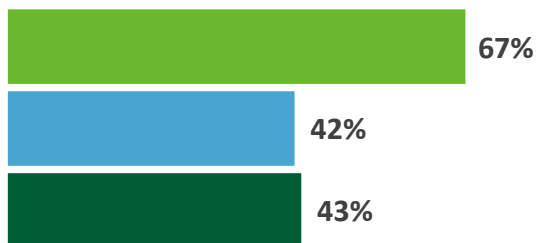
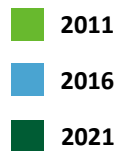
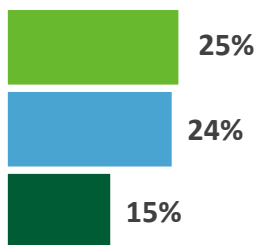
* Includes duplex & detached with suite

Dwellings (Where We Live)

MONTHLY SHELTER COST (MEDIAN)

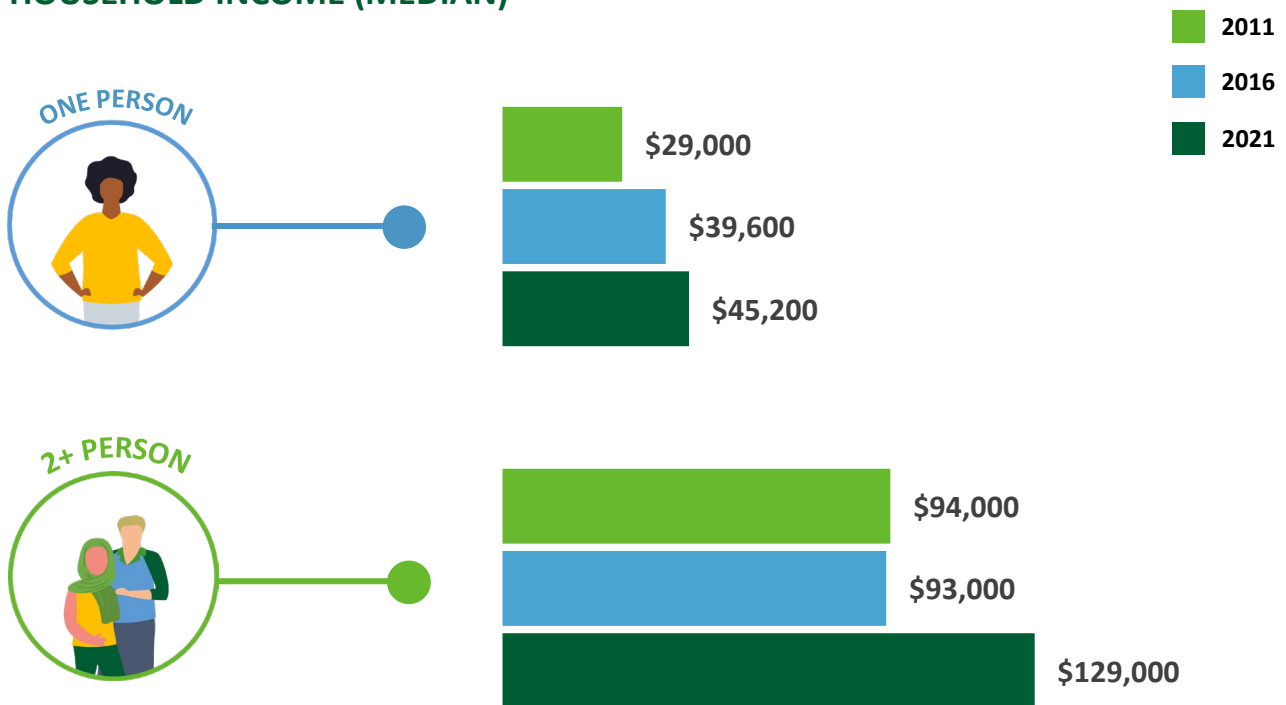


SHARE OF HOUSEHOLDS SPENDING 30%+ OF INCOME ON HOUSING

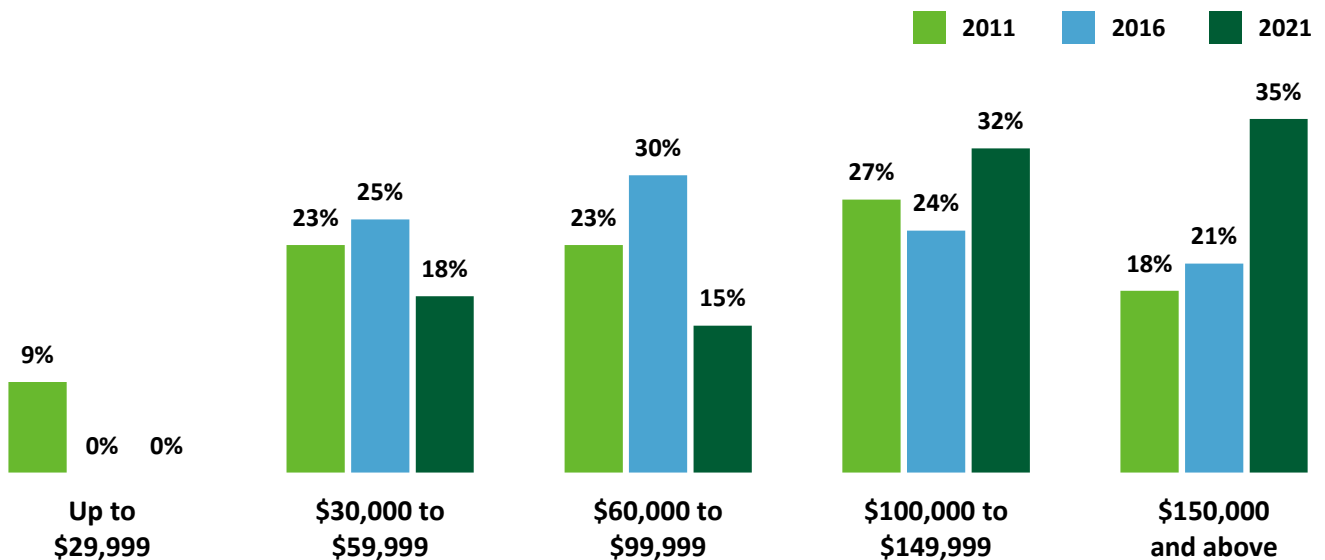


Income (How Much We Make)

HOUSEHOLD INCOME (MEDIAN)

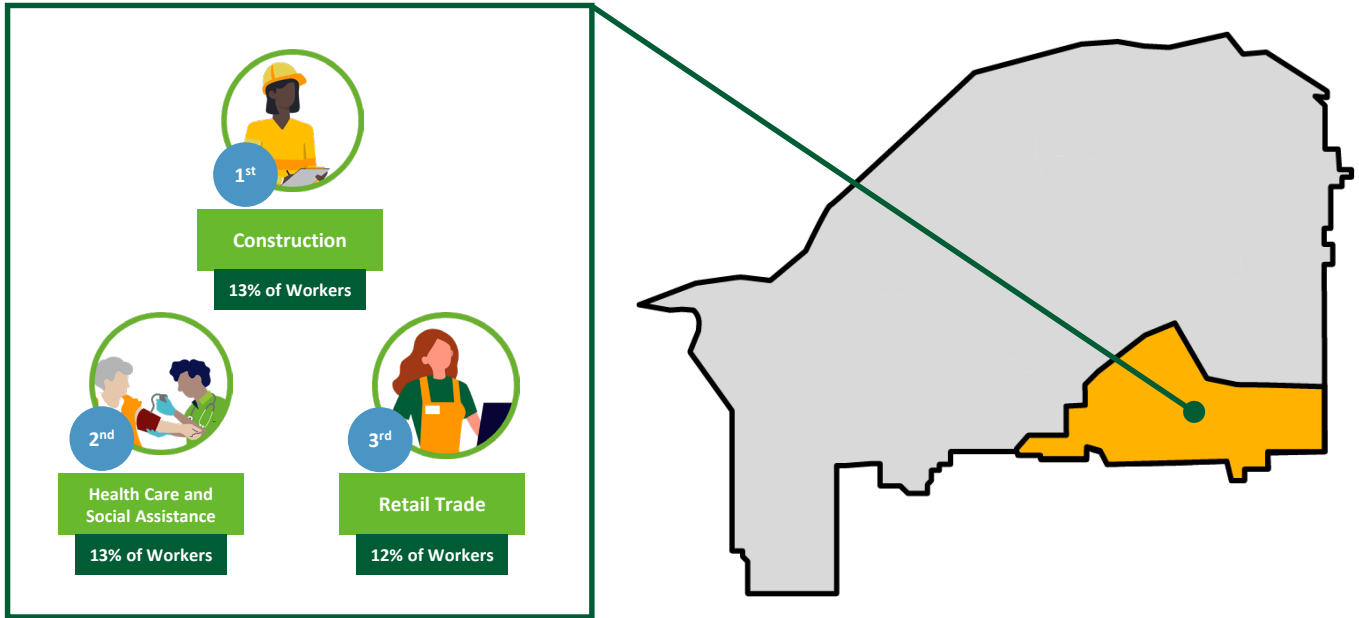


SHARE OF HOUSEHOLDS BY INCOME RANGE

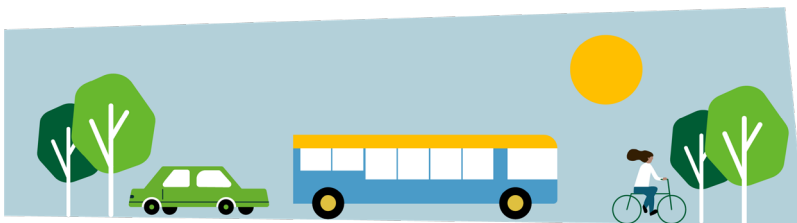


Employment (How We Work)

TOP INDUSTRIES



COMMUTE MODE



	Car	Transit	Bicycle, walk or other
2011	100%	0%	0%
2016	96%	2%	2%
2021	100%	0%	0%

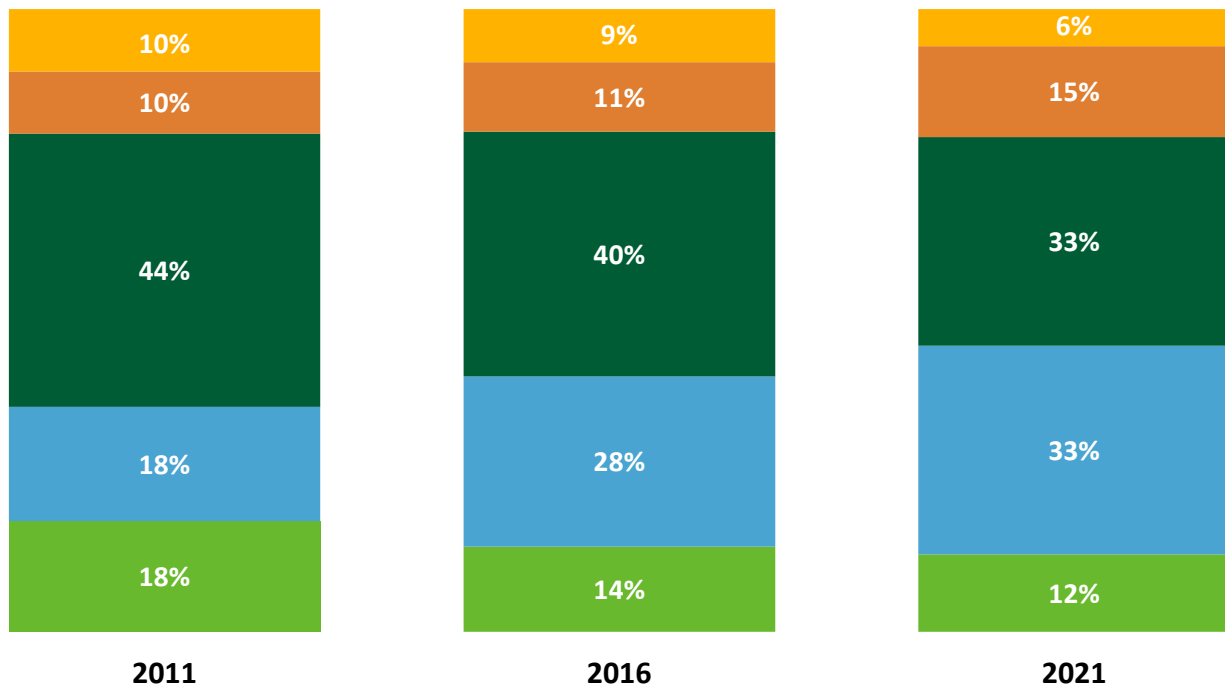
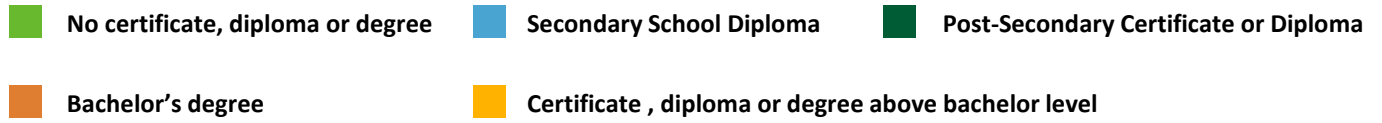
WORK FROM HOME

2011	11%
2016	15%
2021	21%



Education (How We Learn)

EDUCATIONAL ATTAINMENT





DATA SOURCE AND DISCLAIMER:

The data presented in the Chilliwack City-Wide and Neighbourhood Profiles is derived from custom census data based on the dissemination areas making up Chilliwack's neighbourhoods, inclusive of local First Nations. The data is standard indicators based on the 2011, 2016 and 2021 Census Profiles for these unique geographies.

Population counts have been corrected based on the estimated census undercount, potentially resulting in a discrepancy from the public census profile. In addition, standard census rounding and potential data suppression in smaller areas may introduce some error to the presented data.

Questions?

Phone: 604.793.2906
Email: planning@chilliwack.com

In case of an error, please contact the Planning Department so it can be corrected.